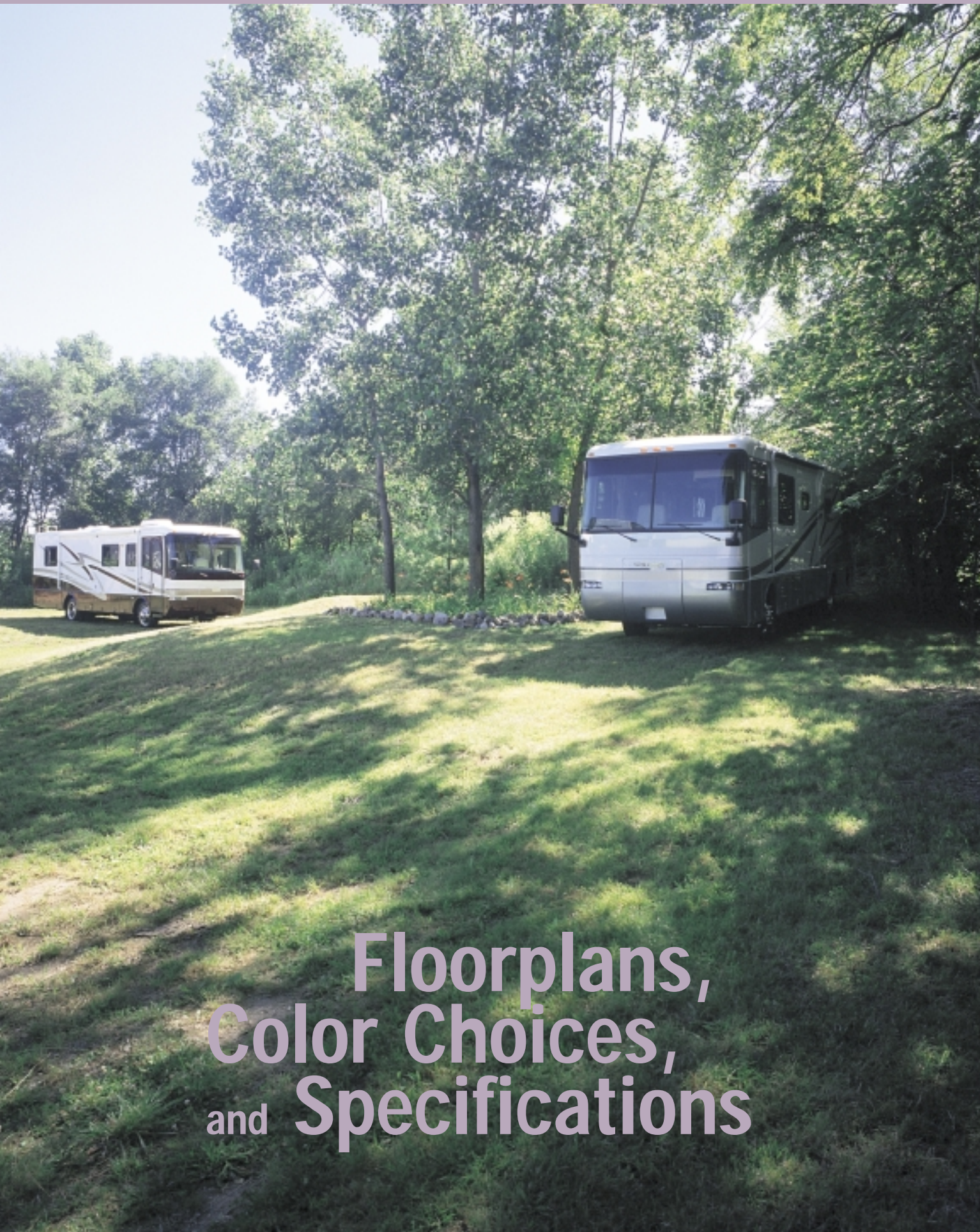




K N I G H T 2 0 0 1



Floorplans,
Color Choices,
and Specifications

Specifications

for the 2001 Knight

Body Construction

Superstructure w/Five Year Warranty
Alumaframed w/Hung Fiberglass Gelcoat Walls
Aluminum Roof
Ozite Ceiling
Steel Framed Floor on Steel Trusses
1 1/2" Steel Tube w/Laminated 5/8" Structurewood
Flooring
Foam Insulated Underbelly w/Luan Backer
Exterior Graphics
One-Piece Polyethylene Storage Compartments
w/Pass Through Storage
Exterior Storage Compartment Doors w/Integrated
Single-Handle Latches
Rear Ladder
Exterior Assist Handle
Fiberglass Front & Rear Cap w/Integrated Bumper
Headlamp w/Turn Signal
Underhood Utility Light
Mud Flaps
Engine Access Doors
Undercoating
Stainless Steel Wheel Simulators
4000lb Hitch Receiver & 6 Point Connector (on
22,000 GVW units)
5000lb Hitch Receiver & 6 Point Connector (on
26,000 GVW units)

Options

3-Point Hydraulic Jacks
Air Over Hydraulic Brakes

Cockpit Features

CD Player/Radio w/Four Speakers
Burlwood Dash Panel
Pilot & Co-Pilot Recliner Seats
Windshield Wipers w/Intermittent Wiper Control
Drink Holder
Fiberglass Automotive Dash Pod
Multi Position Sunvisors
Power Steering
Cruise Control
Tilt Steering Wheel
Electric Automotive Horn
Floor Mats
Prewire for 6-Way Power Pilot & Co-Pilot Seats
Power Heated Remote Mirrors
Rear Vision System w/Sound

Options

Six-Way Power Pilot Seat
Six-Way Power Co-Pilot Seat

Appliances and Accessories

8cu.ft. 2-Way Refrigerator
High Output 3-Burner Range/17" Oven
Space Saver Microwave
Systems Monitor Panel
Cable TV Hook-up & Telephone Jacks
VCR Prep
Prewire for Bedroom 13" TV
TV Antenna & Booster w/12V Recept & TV Jacks
Washer/Dryer Prep
20" Stereo Color TV w/Remote Control in Living
Area

Options

Convection Microwave
8cu.ft. 2-Way Refrigerator w/Icemaker
Digital Satellite Dish Prep
High Output 3-Burner Cooktop w/Recessed Range (no
oven)
4-Door Refrigerator w/Icemaker
13" Color TV w/Remote Control in Bedroom
Combination Washer/Dryer
VCR w/Video Switching Box

Interiors

Hardwood Cabinet Ends
Western Oak Cabinets
Adjustable Shelves in Kitchen Pantry
Wallpaper Border in Bedroom & Bathroom
Raised Panel Hardwood Doors
Overhead Storage Doors w/Struts & Positive Catches
Low Friction Roller Drawer Guides
Marble-like Kitchen Countertops & Sink
Laminate Bathroom Countertops
Medicine Cabinet
Bedspread w/Pillows
Towel Bars in Bathroom
Easy Bed Sleeper Sofa w/Arms
Headboard w/Mirror
Overhead Cabinets in Slide-Out Above Sofa
Booth Dinette w/Storage Door & Drawer
Nylon Carpeting & Pad in Living Area & Bedroom
Mirror at Galley Backsplash
Brass Finished Cabinet Hardware
Mini Blinds
Window Lambrequins
Sink Covers

Fabric Barrel Chair
Wilsonart Laminate Tile Floor in Bathroom & Kitchen

Options

Decors: Tapestry, Wheat, Seafoam
Wood Choice: Regal Cherry or Walnut
Free Standing Dinette w/Two Chairs & Two Folding Chairs
Fabric Recliner
Raised Panel Insert on Refrigerator Door
Curbside Leather Faced Love Seat (36 Z Only)
Leather Faced Recliner
Fabric Wonder Bed
Leather Faced Wonder Bed

Electrical System and Lights

55 Amp Electronic 12V Power Converter
50 Amp 120V Distribution Panel & Cord
2 - 6V Deep Cycle Batteries
110 Volt Outlet Below Table in Wall
Battery Disconnect Switches Inside Near Entry Door
Porch Light
Patio Receptacle
Lights in Outside Storage Compartments
12V incandescent Lights in Ceiling
Cosmetic Light in Bathroom
Power Entry Step w/Light
6.5 LP Genset
Two 18" Fluorescent Ceiling Lights
Water Pump Switch in Service Area

Options

Energy Management System
1500 Watt Inverter w/Two Additional Batteries
7.5 KW Diesel Generator

Heating, Vents and Air Conditioning

One 13.5M BTU Air Conditioner w/Centered Ducted System & Analog Wall Thermostat (N/A 36Z & 36R)
35M BTU Electronic Ignition Furnace
In Floor Ducted Heating System
Wet Bay w/12V Heater
Dash Heating & A/C System w/Defroster
12V Roof Vent in Bath & Kitchen

Options

Two Air Conditioners w/Ducted Air & Wall Thermostat 13.5M BTU & 11.0M BTU (Standard on 36Z & 36R)
Cold Weather Package
12V Attic Fan in Kitchen

Plumbing and LP Systems

Demand Water System & Water Pump
Water Heater By-Pass Valve
Gravity Water Fill
Glass Shower Door w/Brass Frame
One Piece Fiberglass Tub/Shower
Toilet w/Sprayer
Insulated Utility Bay
10 Gallon Gas/Electric Water Heater

Options

Neo Angled Bath Tub (N/A 34Y)

Windows, Doors and Awnings

Tinted Dual Pane Sliding Windows
Entrance Door w/Screen
Slide-Out Room Awning
Patio Awning
Tinted Skylight in Bathroom

Options

Day/Night Pleated Shades in Living Room & Bedroom
Automatic Patio Awning
Front Door Awning

Safety Features

Fire Extinguisher 10BC
Deadbolt Lock on Entrance
120V GFI Protected Circuit
LP Gas Detector
Smoke Detector
Carbon Monoxide Detector
Driver & Passenger Three-Point Seat Belts
Third Brake Safety Light
Egress Window

Due to product improvements, changes during the model year and/or transcription errors that may occur, information represented within this brochure may not be accurate at the time of your purchase. If certain information is significant to your purchasing decision, please confirm the information with your dealer prior to submitting your order. 9.31.00.

Color Choices

for the 2001 Knight

The following designations represent the fabric or carpet usage for all seven (3) interior decors:

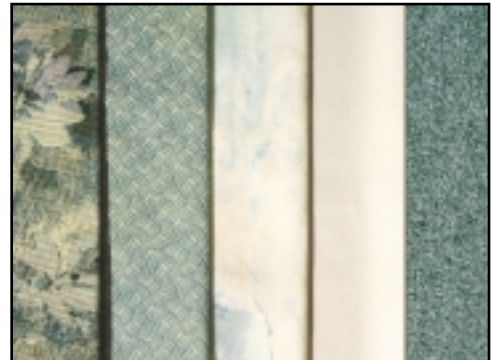
A - Sofa, B - Dining or Chair , C -Bedsread, D - Vinyl/Leather Dash/Furniture, E - Carpet

A B C D E

Tapestry



Seafoam



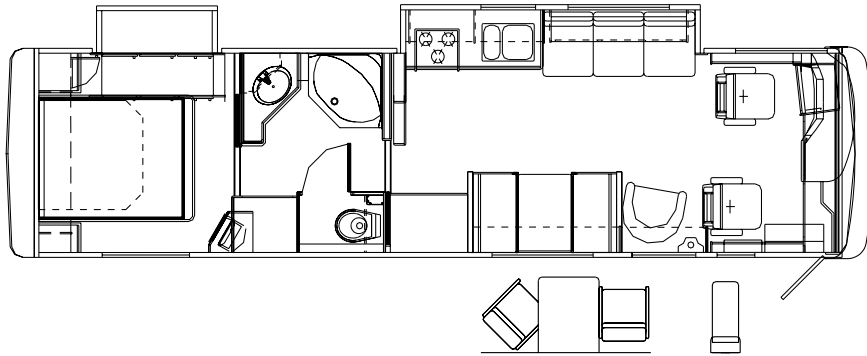
Wheat



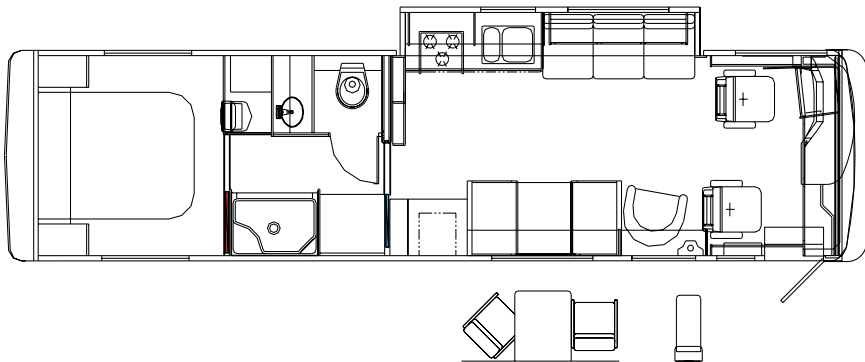
While the color of the motorhomes exterior and the interior fabrics depicted in this sales brochure are fair and reasonable depictions, the colors depicted may not be an exact match of the actual colors because of the variances in photo-processing and variances caused by inserting the photographs within the sales brochure. Due to product improvements and/or changes during the course of the model year, photography represented herein may not reflect exact offerings in your unit. Please confirm item availability with your dealer at the time of the order. 9.31.00.

Floorplans and options for the 2001 Knight

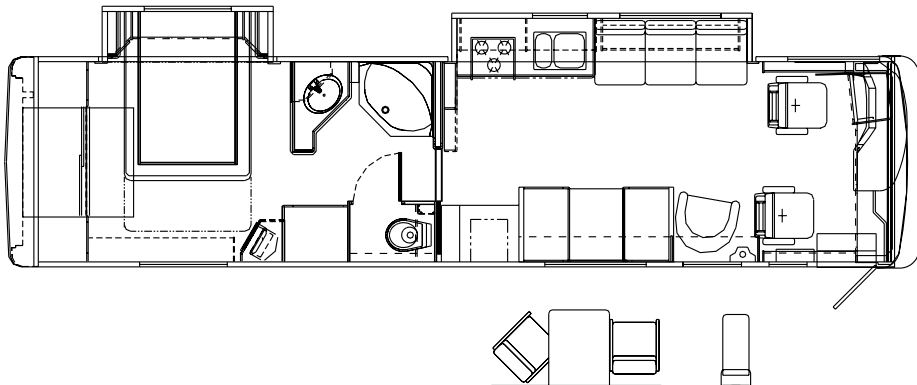
34 H



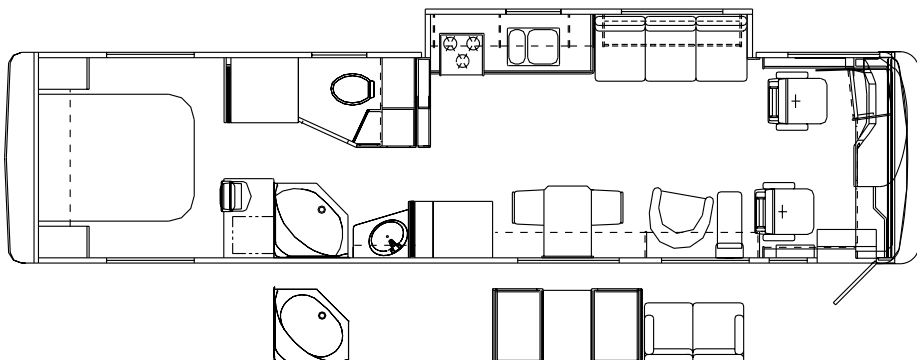
34 Y



36 R



36 Z



Chassis and Weight Charts for the 2001 Knight

Chassis/Engine/Suspension

Chassis	Roadmaster RM4C
Engine	Cummins 260hp ISB w/electronic fuel injection.
Cubic Inch Displacement	359
Torque	550 lbs.ft. Max @ 1900 rpm
Transmission	Allison T-1000 4-Speed
Alternator	160 Amp
Rear Axle Ratio	4.88:1
Suspension	Neway Air Suspension w/4 Outboard Mounted Airbags & 4 Shock Absorbers
Radial Tires	255/70R/22.5H
Diesel Fuel	75 Gallons
Optional Engines*	Cummins 300hp ISB w/Allison 3000MH Transmission, 26,000 GVW & Charged Air Cummins 300hp ISB w/Allison 3000MH Transmission & Charged Air Cummins 315hp ISC w/Allison 3000MH Transmission & Charged Air

* Optional Engines are available only on select floorplans and may have different capacities than those listed above for the standard 260hp engine. Please check with your dealer for availability and specification information.

Weights*	34 Y	34 H	36 Z	36 R
Gross Vehicle Weight Rating(lbs)	22,000	26,000	26,000	26,000
Gross Combined Weight Rating(lbs)	26,000	31,000	31,000	31,000
Front Gross Axle Weight Rating(lbs)	8,500	10,500	10,500	10,500
Rear Gross Axle Weight Rating(lbs)	13,500	15,500	15,500	15,500

Measurements

Wheelbase	204"	204"	228"	228"
Overall Length	34'4"	34'4"	36'4"	36'4"
Height (with A/C)	11'9"	11'9"	11'9"	11'9"
Interior Height	6'6"	6'6"	6'6"	6'6"
Interior Width	94.5"	94.5"	94.5"	94.5"
Exterior Width	100.5"	100.5"	100.5"	100.5"

Tank Capacities

All Tank Capacities are Approximate. Actual "Useable Capacity" May Vary as a Result of Variances in Installation and Fabrication of the Tires.

Water Heater (Gal.)	10	10	10	10
Grey Water (Gal.)	52	52	52	52
Black Water (Gal.)	52	52	52	52
Fresh Water (Gal.)	80	80	80	80
LP Tank (Gal.)**	38	38	38	38

**Actual filled LP capacity is 80% of listing due to safety shut off required on tank.

The information printed in this brochure reflects product design, fabrication, and component parts at the date of printing. The manufacturer reserves the right, at any time, to make changes in product design or material or component specifications as its sole option, without notice. This includes the substitution of components of a different brand or trade name which will result in comparable performance. All information printed in this brochure is subject to change after the date of printing. Some features shown or mentioned in this brochure are optional and may only be available in selected floorplans. Photographs may show props or decorations that are not standard equipment on Monaco models. Monaco, the Monaco logo and its design, are registered trademarks. All other products and company names are trademarks and/or registered trademarks of their respective holders. While the color of the motorhomes exterior and the interior fabrics depicted in this sales brochure are fair and reasonable depictions, the colors depicted may not be an exact match of the actual colors because of the variances in photo-processing and variances caused by inserting the photographs within the sales brochure. Due to product improvements and/or changes during the course of the model year, photography represented herein may not reflect exact offerings in your unit. Please confirm item availability with your dealer at the time of the order. Due to product improvements, changes during the model year and/or transcription errors that may occur, information represented within this brochure may not be accurate at the time of your purchase. If certain information is significant to your purchasing decision, please confirm the information with your dealer prior to submitting your order. 9.31.00.



A Division of Monaco Coach Corporation

91320 Industrial Way, Coburg, Oregon 97408 • Toll Free (800) 634-0855 or (541) 686-8011

Indiana Division 606 Nelson's Parkway, Wakarusa, Indiana 46573 • Toll Free (800) 650-7337

Monaco Coach Corporation is traded on the NYSE under the listing MNC