



MONARCH 2001



Specifications

for the 2001 Monarch

Body Construction

- Alumaframe Superstructure w/Five Year Warranty
- Aluminum Roof
- Steel Cage Cockpit Construction
- Aluminum Exterior Walls
- Interior Paneling w/3/4" Insulation
- Ozite Ceiling
- Steel Framed Floor on Steel Trusses
- 1 1/2" Steel Tube w/Laminated 5/8" Structurewood Flooring
- Underbelly w/Block Foam Insulation
- One-Piece Polyethylene Storage Compartment Enclosures w/Pass Through Storage
- Exterior Storage Compartment Doors w/Single-Handle Latches
- Rear Ladder
- Exterior Assist Handle
- Fiberglass Front & Rear Cap
- Large Curved Aerodynamic Windshield
- Large Single Headlamp w/Turn Signal
- Underhood Utility Light
- Mud Flaps
- Spare Tire in Basement (n/a on 36D)
- One Piece Engine Access Door
- Undercoating
- 5,000 lb. Hitch Receiver w/ Skid Bar & 6 Point Connector

Options

- Stainless Steel Wheel Simulators (Value Package)
- 4 Point Hydraulic Jacks

Cockpit Features

- CD Player/Radio w/Four Speakers
- 12V & 10V Outlet in Cockpit Area
- Radius Windshield Wipers w/Intermittent Wiper Control
- Pilot & Co-Pilot Fabric Recliner Seats
- Engine Cover Drink Tray
- Fiberglass Automotive Dash
- Multi Position Sun Visors
- Power Steering
- Cruise Control
- Tilt Steering Wheel
- Floor Mats
- Electric Automotive Horn
- Power Heated Remote Mirrors
- Rear Vision System Prep

Options

- Six-Way Power Pilot Seat (Value Package)
- Six-Way Power Co-Pilot Seat
- CB Radio Prep
- Dash Workstation
- Rear Vision System (Value Package)

Appliances and Accessories

- 8cu.ft. 2-Way Refrigerator
- High Output 3-Burner Range/17" Oven (Optional in 29W & 32PBD)
- Range Hood w/12V Fan (29W, 30D, 30PBD, 32C, 32PBD, 34SBS, 34SBD Only)
- Microwave w/Touch Control (29W, 30D, 30PBD, 32C, 32PBD, 34SBS, 34SBD Only)
- Space Saver Microwave (N/A 29W, 30D, 30PBD, 32C, 32PBD, 34SBS, 34SBD)
- Systems Monitor Panel
- Cable TV Hook-Up & Telephone Jacks
- TV Antennna & Booster w/12V Recept & TV Jacks
- 19" Color TV w/Remote Control in Living Area

Options

- 8 cu.ft. Refrigerator w/Icemaker
- 4 Door Refrigerator w/Icemaker (34SBS, 34SBD, 34PBD, 36G & 36D Only)
- Convection Microwave
- Satellite Dish Prep (Value Package)
- High Output 3 Burner Cooktop w/Drawer (Standard in 29W & 32PBD)
- 13" Color TV w/Remote Control (Bedroom)
- VCR w/Video Switching Box (Value Package)
- Combination Washer/Dryer (32PBD & 34PBD Only)
- Washer/Dryer Prep w/ 10 Gal. Water Heater (Requires 30 Amp Service) (32PBD & 34PBD only)
- AM/FM Stereo Cassette (deletes CD)

Interiors

- Western Oak Cabinetry
- Raised Panel Hardwood Doors
- Low Friction Roller Drawer Guides
- Laminate Kitchen & Bath Countertops
- Medicine Cabinet
- Wood Drink Tray on Co-Pilot Side
- Entry Rail (Oak & Brass) Comes w/Freestanding Dinette (N/A in 29W, 34SBD, 34SBS)
- Bedspread w/Pillows
- Towel Bar in Bathroom
- Easy Bed Sleeper Sofa
- Wood Booth Dinette w/Storage Doors
- Brass Finished Cabinet Hardware
- Mini Blinds
- Window Lambrequins
- Sink Covers
- One Piece Fiberglass Tub/Shower
- Barrel Chair
- Kitchen Countertop Extension (29W, 32PBD, 34SBS, 34SBD Only)
- Nylon Carpeting & Pad in Living Area, Hallway & Bedroom
- Linoleum Floor in Kitchen (29W, 30D, 30PBD, 32C, 32PBD, 34SBS, 34SBD Only)

Nylon Carpeting in Kitchen (N/A 29W, 30D, 30PBD, 32C, 32PBD, 34SBS, 34SBD)

Linoleum Floor in Bathroom

Options

Decors: Moccasin, Lagoon, Caviar

Colony Oak or Walnut Cabinets

Wilsonart Flooring in Kitchen

Dinette Table w/Two Free Standing Chairs & Two Folding Chairs

Twin Beds (N/A 30D, 32PBD, 32S, 34F, 34SBS, 34PBD, 36D)

Electrical System and Lights

55 Amp Electronic 12V Power Converter

30 Amp 120V Distribution Panel & Cord (Automatic Energy Select Switch Only Available with Second A/C Option)

Two 6V Deep Cycle Batteries

Battery Disconnect Switches

Porch Light

Patio Receptacle

Lights in Outside Storage Compartments

12V Incandescent Lights in Ceiling

Cosmetic Light in Bathroom

Power Entry Step w/Light

5.0kw Generator

18" Fluorescent Ceiling w/Dual Bulb in Living Area

VCR Prep

Options

50 Amp Service

Energy Management System w/ 50 Amp Service

5.5kw Generator

Heating, Vents and Air Conditioning

One 13.5 BTU Air Conditioner w/Ducted Air &

Analog Wall Thermostat (N/A 36G & 36D)

Electronic Ignition Furnace (31M BTU in 29W, 30D, 30PBD, 32C, 32S) (35M BTU in 32PBD, 34S, 34F, 34SBS, 34SBD, 34PBD, 36G & 36D)

Wet Bay w/12V Heater

In Floor Ducted Heating System

Dash Heating & Air Conditioner System w/Defroster

12V Roof Vent in Bath

Options

Two Ducted Air Conditioners (One 13.5M & One 11.0M) w/Wall Thermostat (N/A 29W, Standard in 36G & 36D, Optional all others)

Two Ducted 13.5M Air Conditioners w/Wall Thermostat (36G & 36D Only)

Cold Weather Package

12V Attic Fan (Value Package)

Plumbing and LP Systems

Stainless Steel Kitchen Sink w/Single Lever Faucet

Demand Water System & Water Pump

6 Gallon LP Gas/Electric Water Heater w/Electronic Ignition

Water Heater By-Pass Valve

Gravity or Pressurized Water Fill

Glass Shower Door w/Brass Frame

Toilet w/Sprayer

Insulated Systems Compartment

Options

Water Purifier

Neo Angled Bath Tub (N/A 29W, 32C, 32PBD, 34F, 34SBS, 34SBD, 36G)

10 Gallon Gas/Electric Water Heater w/Electronic Ignition (N/A 34F)

Windows, Doors and Awnings

Tinted Dual Pane Sliding Windows

Radius Entry Door w/Clear Glass, Roller Shade, Screen Door & Anti-Skid Steps

Awning Rail

Tinted Skylight in Bathroom

Options

Automatic Patio Awning

Acrylic Patio Awning w/Brushed Aluminum Arms (Value Package)

Day/Night Pleated Shades (Value Package)

Safety Features

LPG Detector

10 BC Fire Extinguisher

CO Detector

Deadbolt Lock on Entrance Door

120V GFI Protected Circuit

Smoke Detector

Driver & Passenger 3-Point Seat Belts

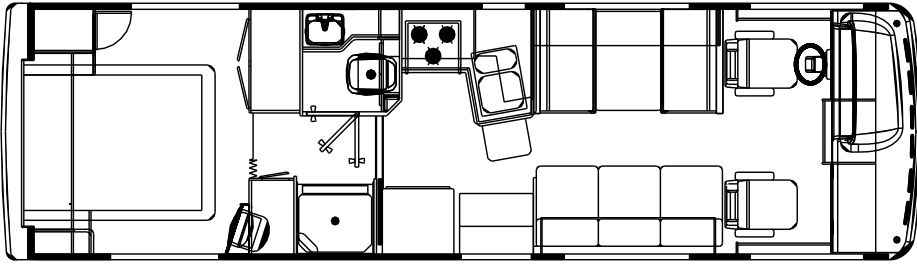
Third Brake Safety Light

Egress Window(s)

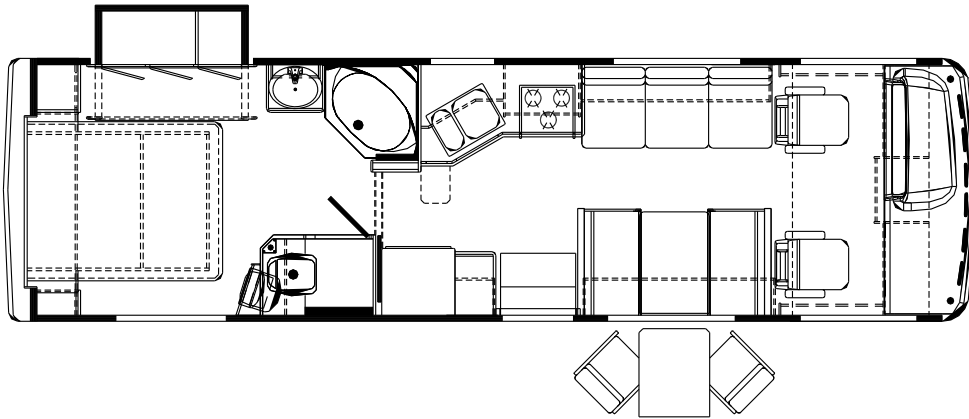
Due to product improvements, changes during the model year and/or transcription errors that may occur, information represented within this brochure may not be accurate at the time of your purchase. If certain information is significant to your purchasing decision, please confirm the information with your dealer prior to submitting your order. 10.10.00.

Floorplans and options for the 2001 Monarch

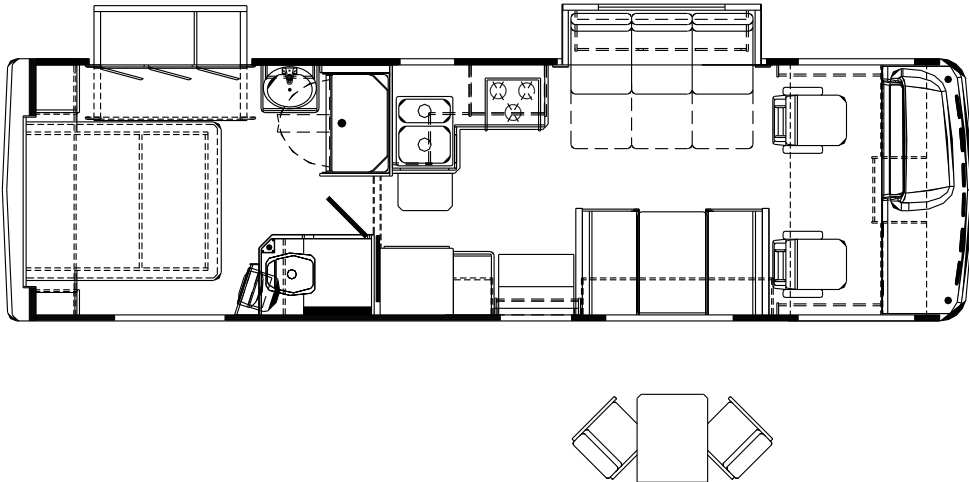
29W



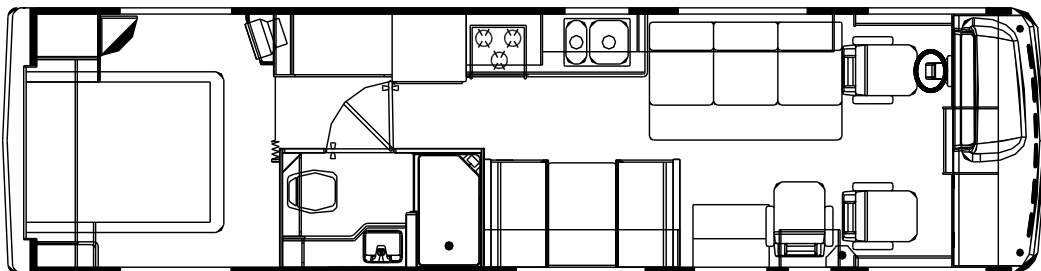
30D



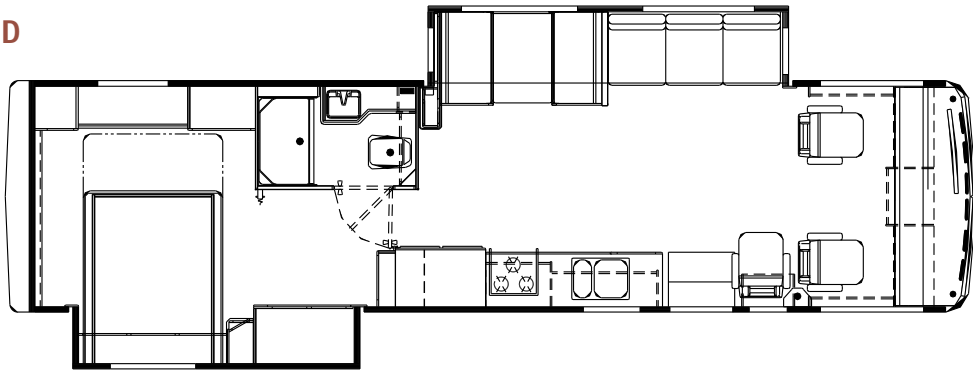
30PBD



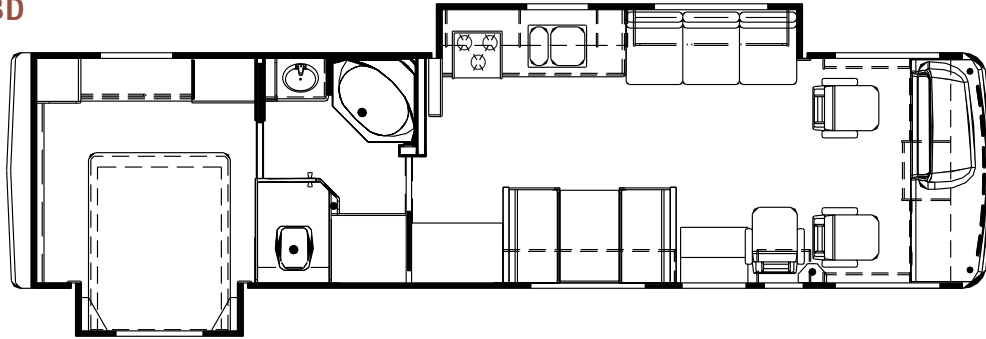
32C



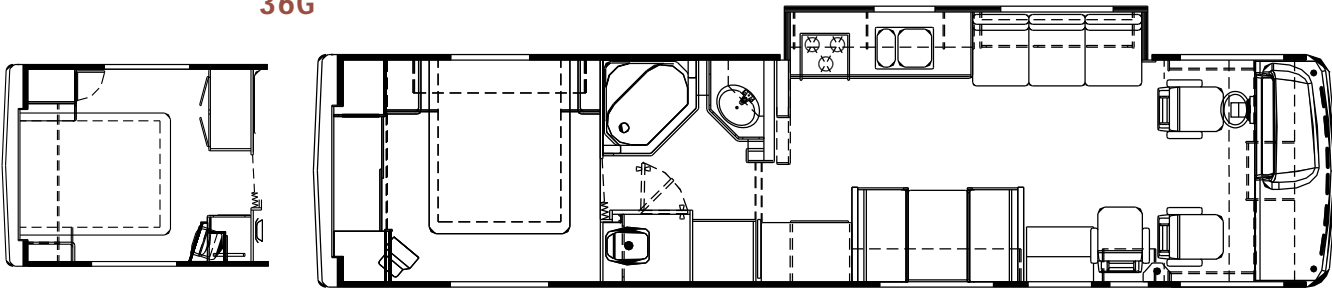
34SBD



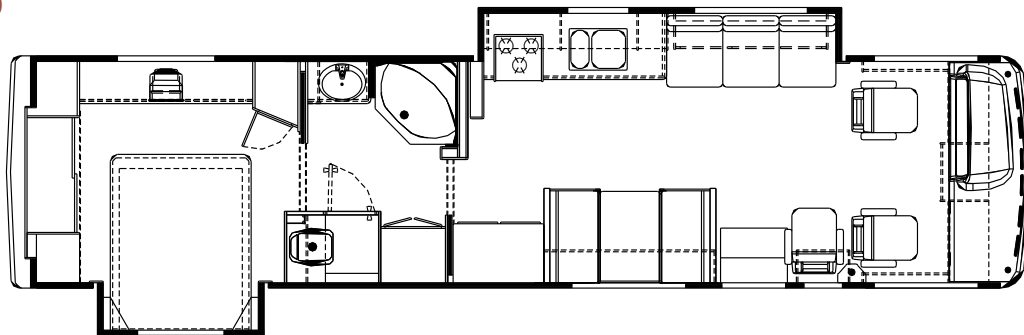
34PBD



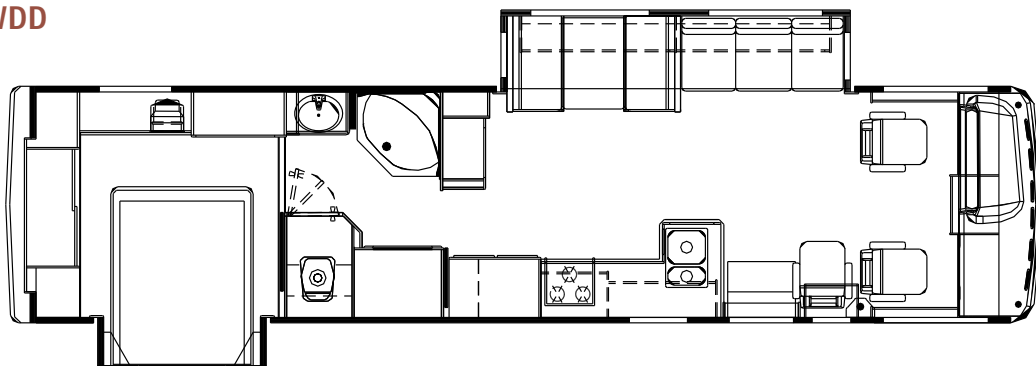
36G



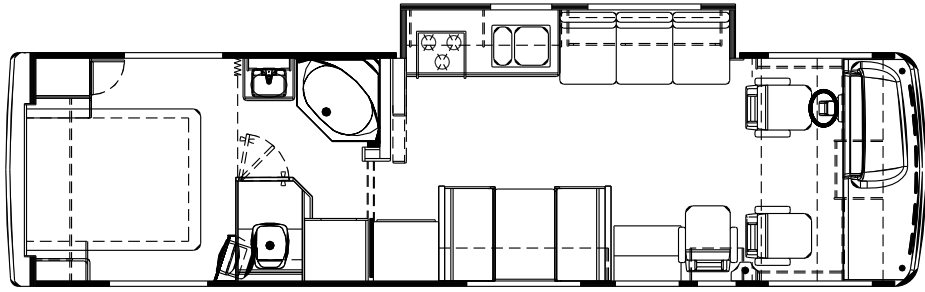
36D



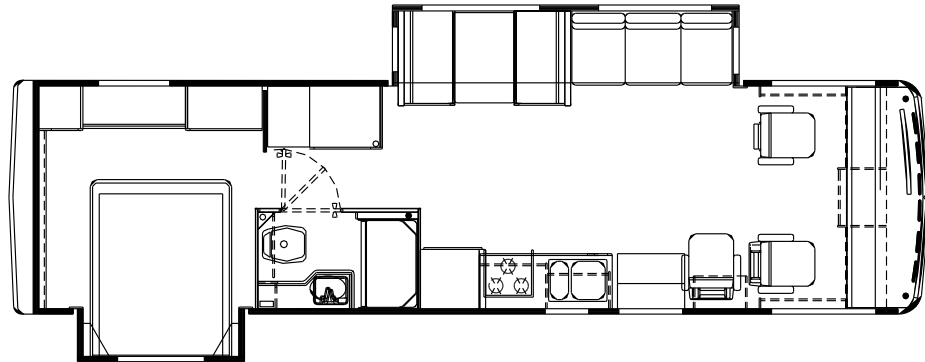
36WDD



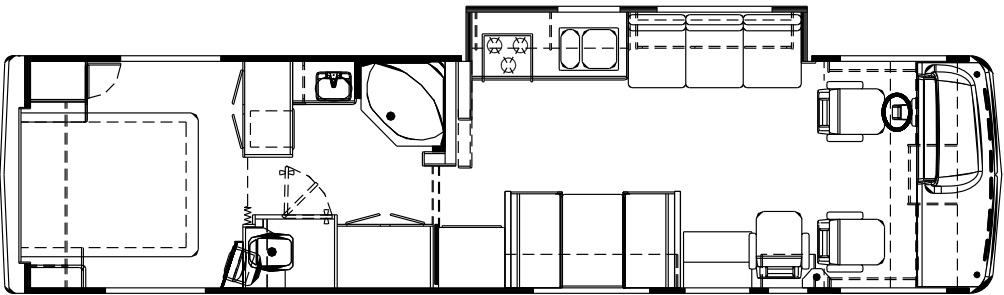
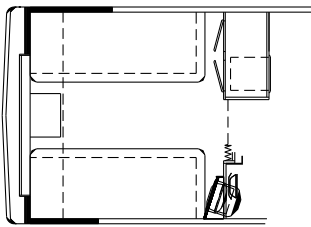
32S



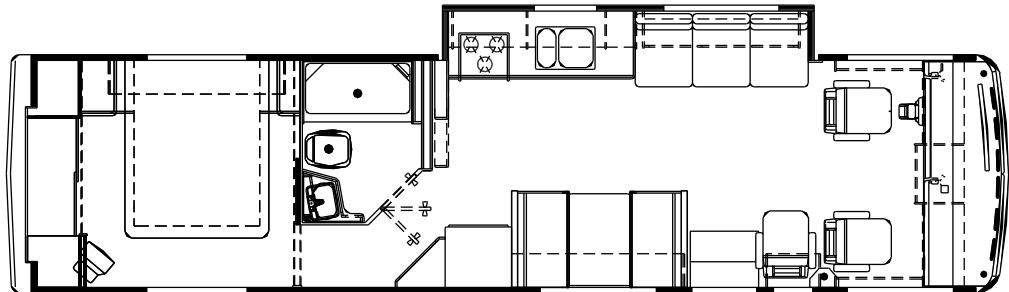
32PBD



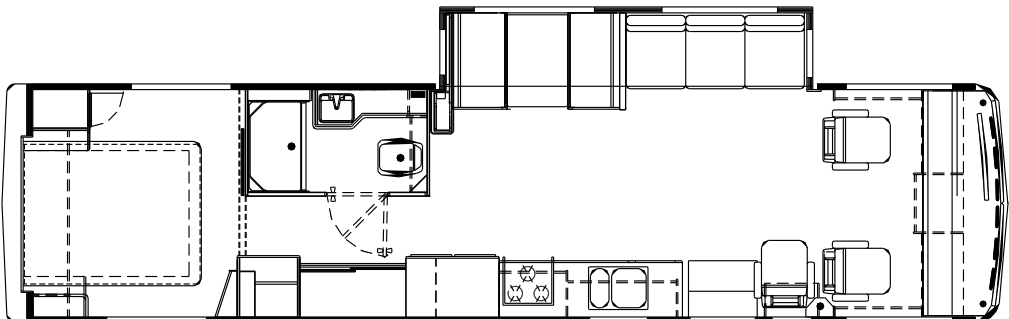
34S



34F



34SBS



Color Choices

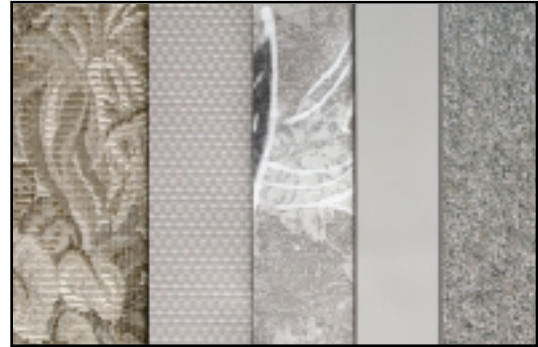
for the 2001 Monarch

The following designations represent the fabric or carpet usage for all three (3) interior decors:

A - Sofa, B - Dining or Barrel Chair, C - Bedspread, D - Vinyl/Leather Dash/Furniture, E - Carpet

A B C D E

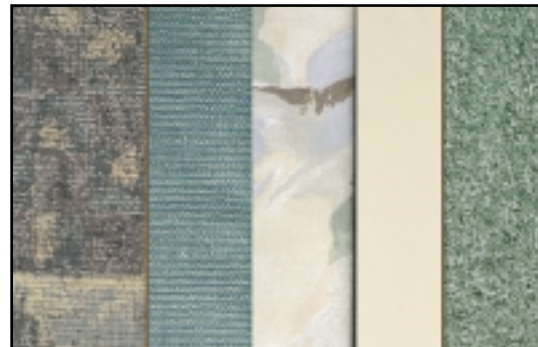
Caviar



Moccasin



Lagoon



While the color of the motorhomes exterior and the interior fabrics depicted in this sales brochure are fair and reasonable depictions, the colors depicted may not be an exact match of the actual colors because of the variances in photo-processing and variances caused by inserting the photographs within the sales brochure. Due to product improvements and/or changes during the course of the model year, photography represented herein may not reflect exact offerings in your unit. Please confirm item availability with your dealer at the time of the order. 10.10.00.

Chassis and Weight Charts

for the 2001 Monarch

Ford Chassis/Engine/Suspension

Engine	6.8L Triton V10
Cubic Inch Displacement	415
Transmission	4-Speed Automatic w/Overdrive
Alternator	130 Amp
Rear Axle Ratio	5.38:1
Radial Tires	245/70R/19.5
Fuel Tank Capacity	75 gallons

Workhorse Chassis/Engine/Suspension

Chassis	Workhorse
Engine	7.4L V8 Electronic Fuel Injection Gasoline Engine
Cubic Inch Displacement	454
Transmission	Automatic 4-Speed w/Overdrive
Alternator	124 Amp
Rear Axle Ratio	9.0:1
Radial Tires	245/70R/19.5
Fuel Tank Capacity	60 gallons

Weights (Ford)	29W	30D	30PBD	32C	32S	32PBD	34S	34F	34SBS	34SBD	34PBD	36G	36D	36WDD
GVWR(lbs)	18,000	16,500	16,500	20,500	20,500	20,500	20,500	20,500	20,500	20,500	20,500	20,500	20,500	20,500
GCWR(lbs)	23,000	21,000	21,000	25,500	25,500	25,500	25,500	25,500	25,500	25,500	25,500	25,500	25,500	25,500
GAWR(Front)(lbs)	7,000	5,500	5,500	7,000	7,000	7,000	7,000	7,000	7,000	7,000	7,000	7,000	7,000	7,000
GAWR(Rear)(lbs)	11,000	11,000	11,000	13,500	13,500	13,500	13,500	13,500	13,500	13,500	13,500	13,500	13,500	13,500

GVWR - Gross Vehicle Weight Rating, GCWR - Gross Combined Weight Rating, GAWR - Gross Axle Weight Rating

Measurements

Wheelbase	190"	190"	190"	208"	208"	208"	228"	228"	228"	228"	228"	228"	228"	228"
Overall Length	29'10"	30'8"	30'8"	32'8"	32'8"	32'8"	34'10"	34'10"	34'10"	34'10"	34'10"	36'6"	36'6"	36'6"
Height (with A/C)	11'8"	11'8"	11'8"	11'8"	11'8"	11'8"	11'8"	11'8"	11'8"	11'8"	11'8"	11'8"	11'8"	11'8"
Interior Height	6'6"	6'6"	6'6"	6'6"	6'6"	6'6"	6'6"	6'6"	6'6"	6'6"	6'6"	6'6"	6'6"	6'6"
Interior Width	94.5"	94.5"	94.5"	94.5"	94.5"	94.5"	94.5"	94.5"	94.5"	94.5"	94.5"	94.5"	94.5"	94.5"
Exterior Width	100.5"	100.5"	100.5"	100.5"	100.5"	100.5"	100.5"	100.5"	100.5"	100.5"	100.5"	100.5"	100.5"	100.5"

Tank Capacities

All Tank Capacities are Approximate. Actual "Useable Capacity" May Vary as a Result of Variances in Installation and Fabrication of the Tanks.

Water Heater(Gal)	6	6	6	6	6	6	6	6	6	6	6	6	6	6
Grey Tank (Gal.)	42	42	42	42	42	42	42	42	42	42	42	42	42	42
Black Tank (Gal.)	42	42	42	42	42	42	42	42	42	42	42	42	42	42
Fresh Tank (Gal.)	70	55	55	67	67	67	67	67	67	67	55	67	55	55
LP Tank (Gal.)*	32.9	32.9	32.9	32.9	32.9	32.9	32.9	32.9	32.9	32.9	32.9	32.9	32.9	32.9

*Actual filled LP capacity is 80% of listing due to safety shut off required on tank.

The information printed in this brochure reflects product design, fabrication, and component parts at the date of printing. The manufacturer reserves the right, at any time, to make changes in product design or material or component specifications as its sole option, without notice. This includes the substitution of components of a different brand or trade name which will result in comparable performance. All information printed in this brochure is subject to change after the date of printing. Some features shown or mentioned in this brochure are optional and may only be available in selected floorplans. Photographs may show props or decorations that are not standard equipment on Monaco models. Monaco, the Monaco logo and its design, are registered trademarks. All other products and company names are trademarks and/or registered trademarks of their respective holders. While the color of the motorhomes exterior and the interior fabrics depicted in this sales brochure are fair and reasonable depictions, the colors depicted may not be an exact match of the actual colors because of the variances in photo-processing and variances caused by inserting the photographs within the sales brochure. Due to product improvements and/or changes during the course of the model year, photography represented herein may not reflect exact offerings in your unit. Please confirm item availability with your dealer at the time of the order. Due to product improvements, changes during the model year and/or transcription errors that may occur, information represented within this brochure may not be accurate at the time of your purchase. If certain information is significant to your purchasing decision, please confirm the information with your dealer prior to submitting your order. 10.10.00.



A Division of Monaco Coach Corporation

91320 Industrial Way, Coburg, Oregon 97408 • Toll Free (800) 634-0855 or (541) 686-8011

Indiana Division 606 Nelson's Parkway, Wakarusa, Indiana 46573 • Toll Free (800) 650-7337

Monaco Coach Corporation is traded on the NYSE under the listing MNC