



DRIVING YOUR DREAM.

LAPALMA® XL



LAPALMA® XL

POWER IN THE PALM OF YOUR HAND.

The power of a diesel or rear engine gas coach is now within reach. Presenting the LaPalma XL for 2008. This is what can happen when you take last year's XL features, make them all standard, and add a long list of upgrades like a 26" LCD TV, a central water filtration system, and the leatherette swivel rocker shown here (34PDD). With luxury this close, you simply *have* to make it yours.

**KITCHEN.** In the kitchen, we've included all the topnotch appliances you'd expect from Monaco, plus a few extras. Like a Corian® backsplash, smoked mirrors behind the cooktop, and a large pantry with rollout storage.

**BEDROOM.** One look at the sumptuous headboard on the queen bed, and you'll know you've found the right coach. The 34PDD shown here features a desk/dresser opposite the bed, a 20" color TV with remote, blackout day/night shades, and new wooden slide-out fascia. Very nice.



#### WHAT'S NEW FOR '08.

- Available rear gas engine Workhorse chassis floorplan
- 26" LCD TV in cockpit overhead
- Spacesaver convection microwave
- Central water filtration system
- China toilet with sprayer
- New profile raised panel cabinet doors
- New hardwood pocket door
- All XL package items now standard — redesigned baggage doors, beveled kitchen mirror, upgraded linoleum with runner, new slide-out fascia, upgraded countertops, new decorative wallboard, upgraded sofa, and more



LUXURY. INNOVATION. HAPPY TRAVELERS. IT ALL SAYS MONACO.

INTERIOR



Wherever you travel across America, it's easy to spot the Monaco owners. They're the ones with the smug, happy grins on their faces. And who could blame them? When you own a Monaco, you own the best. The best in luxury, performance, safety, technology and comfort. It's all here. And it's all yours for the taking. Come on, freedom lovers. Make your move to Monaco luxury. After all, you already know how to grin.



34PDD | NATURAL CHERRY | URBAN LOFT



BACK ROADS OR FREEWAY? GAS OR DIESEL?

 PANAVIEW™

1-PIECE WINDSHIELD



## LAPALMA® XL COCKPIT/EXTERIOR



At Monaco, we like to keep everybody happy. That's why, for 2008, we're offering a real doozy of a choice for all you gas engine fans out there. Introducing our new rear gas engine Workhorse chassis (38PLT only). It combines everything you love about gas engines with a super quiet ride.

But whether you choose gas or diesel, it's going to be a sweet ride all the way — with a six-way power pilot seat, power sunvisors, and a rear vision system with audio and adjustable camera. To keep you humming along, there's also a CD player/radio with weather band, six speakers, and Sirius-ready compatibility.

**NO SEAMS. ADDED SAFETY.** With our exclusive Panaview™ 1-Piece Windshield, you get a clear view of the world ahead. There's no annoying black rubber seam running down the middle of the windshield. It's the largest unobstructed view in the industry.

**COCKPIT.** Is it a cockpit or a conversation area? Either way, you'll be totally comfy in our plush leatherette helm seats and swivel rocker shown here (34PDD). The party table is just right for snacks, beverages, a laptop, or a quick game of cards. And this year, we've upgraded the TV to a 26" LCD model.

**PASS-THROUGH STORAGE.** Got stuff? Good, because we have roomy pass-through storage areas (under the slide-outs) and one-piece polyethylene boxes for quick and easy cleaning.



34PDD | NATURAL CHERRY | URBAN LOFT





**WORKHORSE UFO™  
RAISED RAIL CHASSIS:**

Available on the 38PLT floorplan

- › GM Vortec 8100 V8 (8.1L) Gas Engine with Allison® 2000 Series 6-Speed Automatic Transmission with 5th and 6th Gear Overdrives
- › 5,000 Lb. Hitch Receiver with Dual Connector 4-Pin or 7-Pin



**ROADMASTER RSR RAIL CHASSIS**

With the LaPalma Diesel XL, you enjoy the added assurance of knowing you're riding on a Roadmaster RSR Rail chassis. All Roadmaster chassis are custom designed and built to the exact specifications of each floorplan for best-in-class performance, safety and comfort. The smooth-handling RSR chassis is teamed here with a Cummins® 340 HP rear diesel engine for a powerful diesel pusher package that'll take you anywhere you want to go in style.

The 38PLT floorplan features the innovative rear-powered Workhorse UFO™ raised rail chassis with a GM Vortec gas engine. Together they give you rear-powered performance combined with the easy maintenance of a gas engine.

Our exclusive SmartStructure II truss system is engineered as part of the chassis and provides superior strength, rigidity and balance. To prevent corrosion, the structure is pre-primed and coated with rust-inhibiting paint.

**ITEMS 2-5 APPLY ONLY TO DIESEL FLOORPLANS**

- 1** The steel cage cockpit gives the Roadmaster and Workhorse chassis incomparable strength and safety at the front of the coach.
- 2** Every Roadmaster chassis features a steel firewall for added protection in the cockpit.
- 3** The Allison® 1000 MH (34SBD & 34PDD) (2100 MH on 36SBD & 36WBD) 6-speed transmission features a pushbutton shift pad.
- 4** A 4,000 lb. (34SBD & 34PDD) (5,000 lb. on 36SBD & 36WBD) hitch receiver with dual connector, 4-pin or 7-pin, is prewired for a supplemental braking system that works with your tow vehicle.
- 5** Radial tires (255/70R/22.5) let you drive with peace of mind.

**MAY WE BUILD YOU A CHASSIS?**

Did you know that every Roadmaster chassis is custom designed and built for the Monaco coach that will ride on it? It's a novel idea, but our owners seem to like it. And it pays off — in better performance, safety and reliability. Owners also like the fact that Roadmaster,

a division of Monaco Coach Corporation, only does one thing: They build chassis for motorhomes. Not trucks. Not buses. Just motorhomes. So naturally, they do it better. No wonder Roadmaster is the leading high-end diesel chassis manufacturer in America.

**CUMMINS® ISB-AD 340 HP:**  
(DIESEL FLOORPLANS ONLY)

This rear-mounted, low-torque engine gives you added muscle when you need it most. It delivers 660 lbs./ft. torque and comes with an Allison® 1000 MH 6-speed transmission featuring pushbutton shift pad.



**SLIDE-OUT CONSTRUCTION:**

When you purchase a Monaco Coach, you can be sure the slide-out boxes are some of the strongest and most reliable you'll find anywhere. They feature our exclusive multi-layer construction to give you maximum insulation and to reduce the chance of warping, twisting or shifting.



**WARRANTIES**

12 MONTH/24,000 MILE basic limited warranty

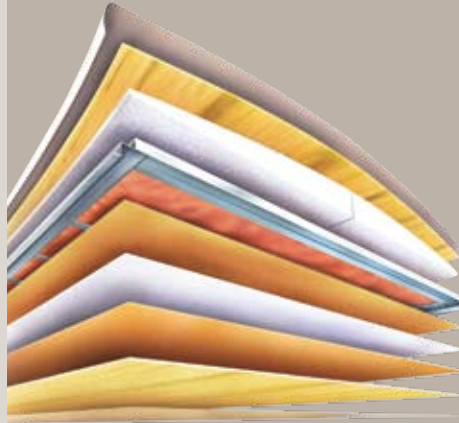
5 YEAR/50,000 MILE limited warranty on aluminum or steel frame structure of sidewall, roof, front and rear cap

3 YEAR/50,000 MILE limited warranty on Roadmaster chassis

3 Year/36,000 Mile limited warranty on Workhorse UFO™ Raised Rail Chassis

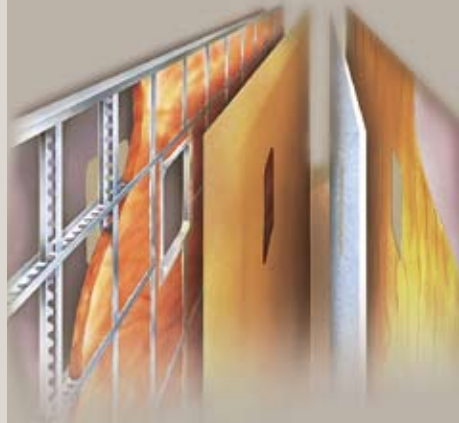
Applies to certain models. See owner's manual for complete details.

**LAPALMA® XL  
CONSTRUCTION**



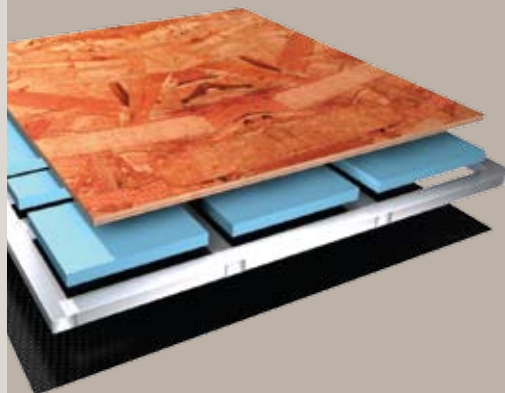
**9-LAYER ROOF  
CONSTRUCTION:**  
(top to bottom)

- One-piece peaked fiberglass roof
- Luaun backing
- Thick, tapered bead foam insulation
- Aluminum double I-beam superstructure filled with fiberglass insulation
- Vapor barrier
- Structure foam: thermal insulative barrier
- 1/2" bead foam insulation
- Foam padding for extra insulation
- Padded vinyl ceiling



**5-LAYER SIDEWALL  
CONSTRUCTION:**  
(left to right)

- Smooth gel coat fiberglass
- Interlocking C-Channel filled with 1-1/2" fiberglass insulation bonded in place so it doesn't sag or leave spaces uninsulated
- Vapor barrier
- Bead foam adds comfort, saves energy and provides a thermal insulative barrier
- Interior paneling



**4-LAYER FLOOR  
CONSTRUCTION:**  
(top to bottom)

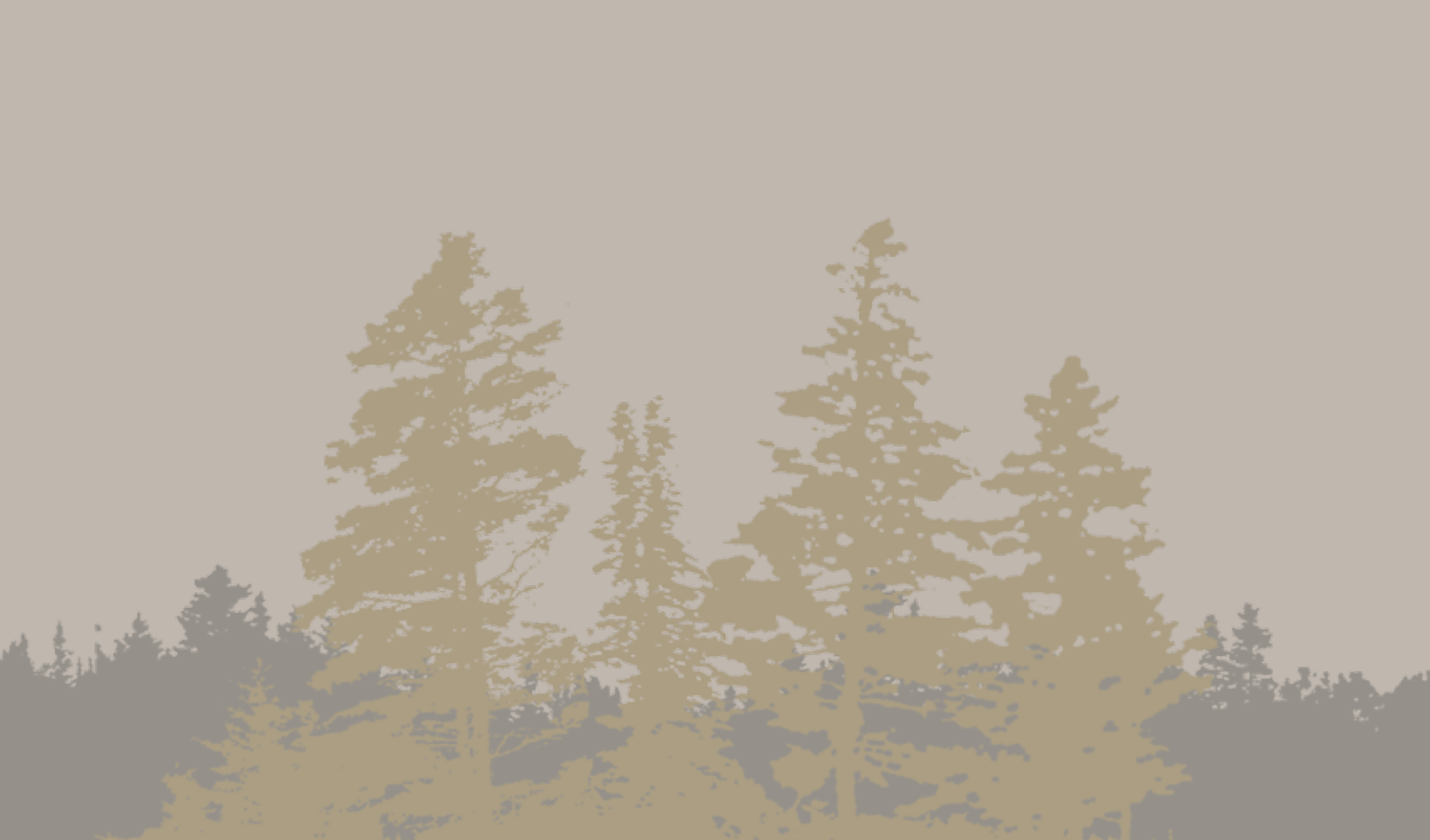
- Structurwood™
- Blue foam insulation
- 1-1/2" aluminum tube
- Three-ply poly underbelly



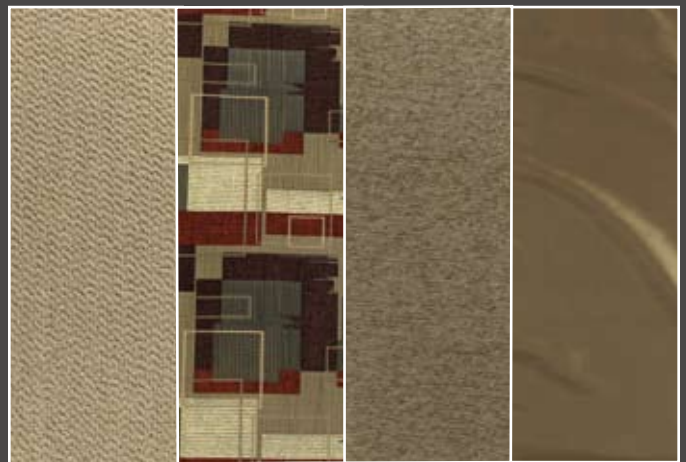
**ASSISTANCE**  
SALES • TECH • ROADSIDE  
**1-877-4MONACO**

**WE'RE HERE. ANYTIME, EVERY TIME.**

- Reach us anytime — literally — via our live customer support line.
- Drive in to one of our 350 Service Centers.
- Enjoy the first year free when you enroll in our Owner Advantage Roadside Assistance Program.
- See where it all begins with a tour of one of our facilities in Indiana or Oregon. Call **1-800-650-7337** or **1-800-634-0855** to find out more.



AUTUMN TRAIL







NEWPORT CHERRY



CHAMPAGNE SELECT



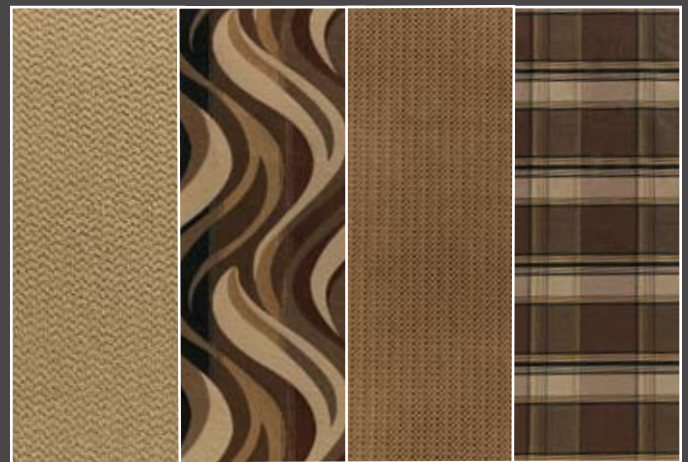
WHICH WAY WILL YOU GO?

We know you love choices. That's why our designers give you so many tempting options. From mild to wild, discriminating to daring, Monaco offers lots of fun ways to go.

REMBRANDT

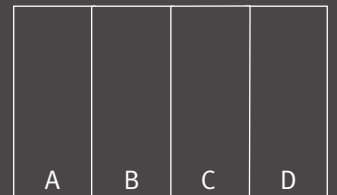


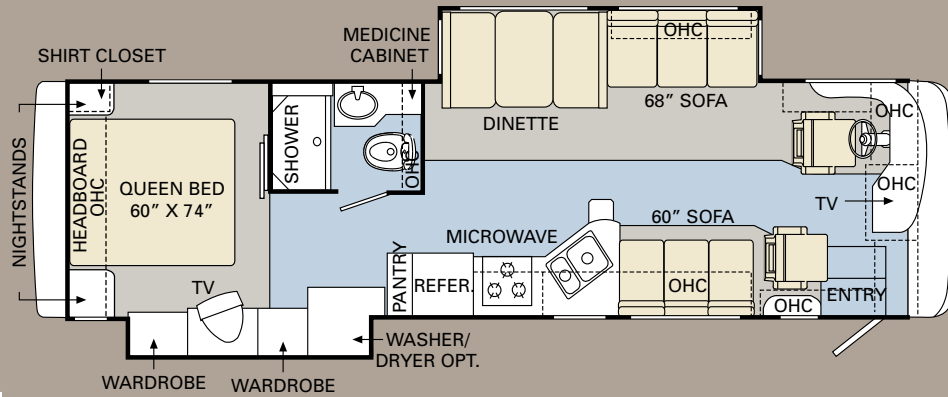
URBAN LOFT



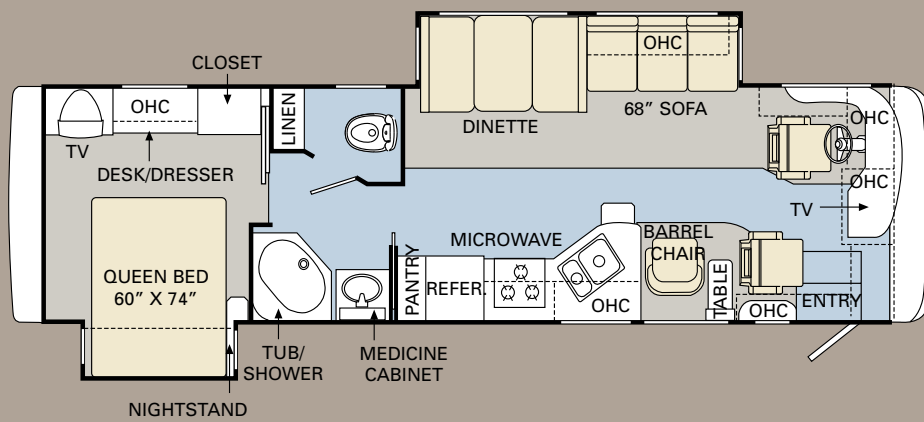
Note: Colors depicted are a reasonable representation though they may not be an exact match of the actual colors due to variances in processing and production. See your dealer for actual fabric and paint chip samples.

- Carpet A
- Dinette B
- Sofa C
- Bedsread D

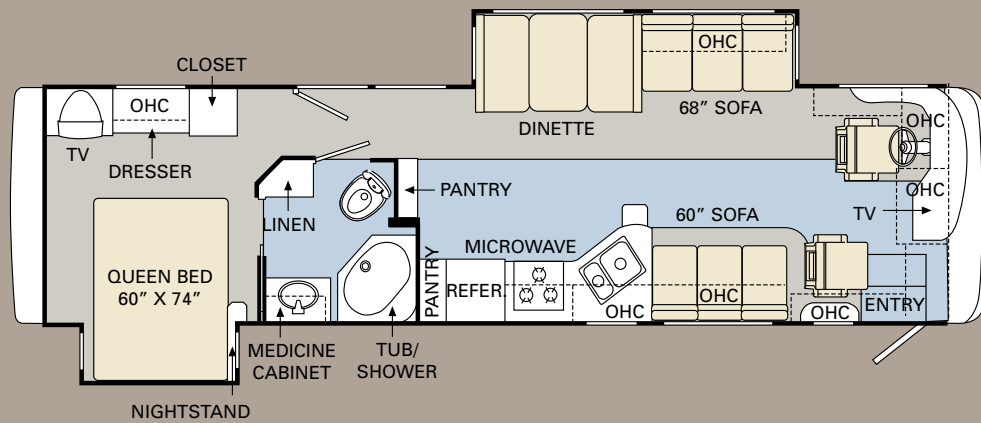




34SBD DIESEL



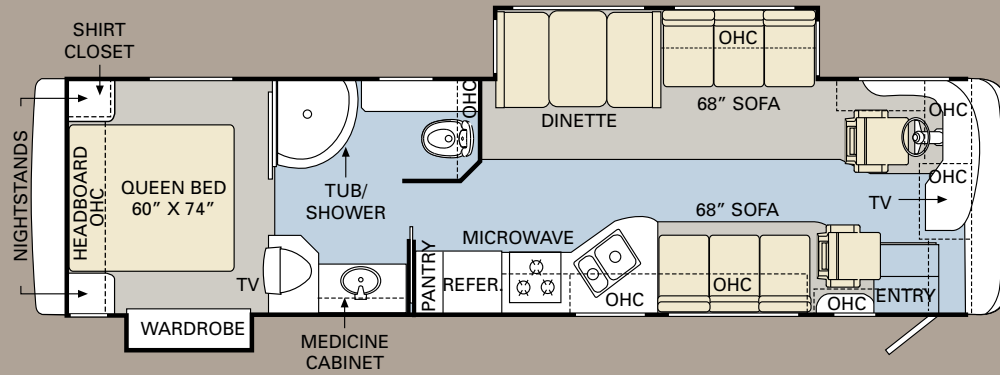
34PDD DIESEL



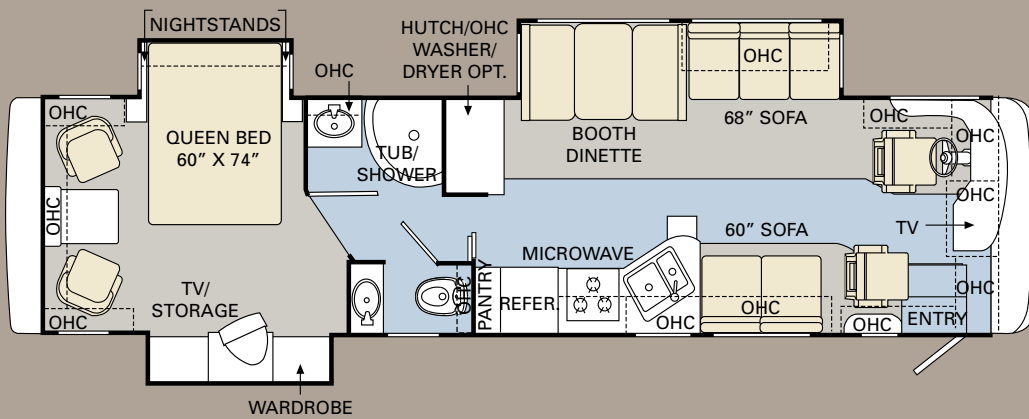
36SBD DIESEL

■ TILE ■ CARPET

Ready to choose? The LaPalma XL is available in six thoughtfully designed floorplans from 34 to 38 feet. This year, you can choose from double or triple slide-outs to suit your lifestyle. And remember, rear gas engine Workhorse chassis floorplan is now available (38PLT).



36WBD DIESEL



38PLT REAR GAS

ALL ROADS LEAD TO [WWW.MONACOCOACH.COM](http://WWW.MONACOCOACH.COM).

Wherever the road takes you, you're never more than a click away from your friends at Monaco. Just go to [www.monacocoach.com](http://www.monacocoach.com) for all the latest product news, club dates and destinations, a dealer locator function, and factory tour information. You can also e-mail us directly through the site at any time.





# SPECIFICATIONS

Due to continuous product improvement, please see the website for the latest in standards and options, specifications, and technical data. *Go to [www.monacocoach.com](http://www.monacocoach.com).*

	Weight Ratings (Lbs.)																
	Gross Vehicle	Gross Combined <sup>1</sup>	Front Gross Axle	Rear Gross Axle	Measurements	Wheelbase	Overall Length	Overall Height (with A/C) (add 5" for satellite option)	Interior Height	Interior Width	Exterior Width	Tank Capacity (Gal.) <sup>2</sup>	Water Heater	Gray Tank	Black Tank	Fresh Tank	LP Tank <sup>3</sup>
34SBD DIESEL	22,000	26,000	8,500	14,500		192"	35' 6"	12' 5"	84"	94.5"	100.5"	10	60	40	70	20	75
34PDD DIESEL	22,000	26,000	8,500	14,500		192"	35' 6"	12' 5"	84"	94.5"	100.5"	10	60	40	70	20	75
36SBD DIESEL	25,500	30,000	9,500	16,000		216"	37' 6"	12' 5"	84"	94.5"	100.5"	10	60	40	90	20	75
36WBD DIESEL	25,500	30,000	9,500	16,000		216"	37' 6"	12' 5"	84"	94.5"	100.5"	10	60	40	90	20	75
38PLT REAR GAS	26,000	30,000	9,500	17,500		242"	39' 1"	12' 8"	84"	94.5"	100.5"	10	60	40	90	20	100

<sup>1</sup>Towing capacity is limited by GCWR; your vehicle's towing capacity is the difference between the GCWR and the actual vehicle weight, including all water, fuel, passengers and cargo. Your towed vehicle should be equipped with auxiliary brakes if the weight of the towed vehicle exceeds 1,000 lbs. Consult your owner's manual for further towing information.

<sup>2</sup>All tank capacities are estimated based upon calculations provided by the tank manufacturers and represent approximate capacities. The actual "usable capacity" may be greater or less than the estimated capacities based upon fabrication and installation of the tanks.

<sup>3</sup>Actual filled LP capacity is 80% of listing due to safety shut-off required on tank.

The actual overall length of the recreational vehicle may differ from that indicated in the brochure due to variances in the manufacturing process and/or installed components. The actual length may be greater or less than that indicated. Due to the large variety of options and floorplan arrangements available to our customers, actual weights for each unit can differ significantly. Monaco Coach provides a weight sticker on each unit we produce which includes that unit's tank capacities and approximate weight. Consult your local Monaco Coach dealer for unit availability and further information. The information printed in this brochure reflects product design, fabrication, and component parts at the date of printing. The manufacturer reserves the right, at any time, to make changes in product design or material or component specifications as its sole option, without notice. This

includes the substitution of components of a different brand or trade name which will result in comparable performance. All information printed in this brochure is subject to change after the date of printing. Some features shown or mentioned in this brochure are optional and may only be available in selected floorplans. Photographs may show props or decorations that are not standard equipment on Monaco Coach models. Monaco Coach, the Monaco logo and its design, are registered trademarks. All other products and company names are trademarks and/or registered trademarks of their respective holders. While the color of the motorhome's exterior and the interior fabrics depicted in this sales brochure are fair and reasonable depictions, the colors depicted may not be an exact match of the actual colors because of the variances in photo-processing and variances caused by inserting the photographs

within the sales brochure. **Due to product improvements, changes during the model year and/or transcription errors that may occur, information represented within this brochure may not be accurate at the time of your purchase. If certain information is significant to your purchasing decision, please confirm the information with your dealer prior to submitting your order.** Component part and appliance manufacturers issue limited warranties covering those portions of the recreational vehicle not covered by the Limited Warranties issued by Monaco Coach Corporation. To learn which specific component parts and appliances are excluded from the Limited Warranties issued by Monaco Coach Corporation, please contact your selling dealership or Monaco Coach Corporation directly, or review the warranty packet inside the recreational vehicle.

## BODY CONSTRUCTION

- › Alumaframe® Superstructure
- › Steel Cage Cockpit Construction
- › Smooth Gel Coat Fiberglass Exterior Walls
- › Front and Rear Molded Fiberglass Caps
- › One-Piece Generator Access Door
- › Rear Engine Doors
- › Fiberglass Engine Cover
- › PanaView™ 1-Piece Front Windshield
- › 84" Interior Height
- › Front-Mounted Mirrors with Power Control Heads and Heat
- › Metal Exterior Top-Hinged Baggage Doors
- › Metal-Hinged Fuel Door with Lock
- › Pass-Through Storage Bays under Slide-Outs
- › One-Piece Polyethylene Storage Compartment
- › LaPalma XL Deluxe Full-Body Paint with Vinyl Graphics
- › Rear Ladder
- › Carpeted Electric Flush Floor Stepwell Cover
- › Interior Rubber Entry Step
- › Exterior Single Entry Step (N/A:38PLT)
- › Exterior Double Entry Step (38PLT)
- › Undercoating

## OPTIONS

- › Film Front Protection Mask
- › Chrome Front-Mounted Mirrors with Power Control Heads and Heat
- › Standard Run Savings Package: 3-Camera Rear Vision System with Audio and Adjustable Center Camera, Home Theater Surround Sound System with Sub-Woofer, Eclipse Automatic Poly-Weave Patio Awning



## ROADMASTER RSR RAIL CHASSIS/ENGINE/SUSPENSION (DIESEL FLOORPLANS ONLY)

- › Cummins® ISB-AD 340 HP Low-Torque Engine with Allison® 1000 MH 6-Speed World Transmission (34SBD, 34PDD) (2100 MH on 36SBD and 36WBD)
- › Pushbutton Shift Pad
- › Engine Displacement: 409"/6.7L
- › Torque: (@ 1,600 RPM) 660 lbs./ft. Max. Net
- › 75 Gallon Fuel Tank
- › 156 Amp Alternator
- › Radial Tires: 255/70R/22.5
- › Stainless Steel Wheel Simulators
- › Leaf Spring Suspension
- › Four Gas Shock Absorbers
- › Performance Suspension Package
- › Hydraulic Anti-Lock Braking System with Hydraulic Disc Brakes
- › Exhaust Brake VG Turbo with Engine
- › Prewire for Supplemental Braking System
- › Air Cleaner Restriction Indicator
- › Fully Automatic Hydraulic Leveling System
- › 4,000 Lb. Hitch Receiver with Dual Connector 4-Pin or 7-Pin (34SBD, 34PDD)
- › 5,000 Lb. Hitch Receiver with Dual Connector 4-Pin or 7-Pin (36SBD, 36WBD)

## WORKHORSE UFO™ RAISED RAIL CHASSIS/ENGINE/SUSPENSION (GAS FLOORPLANS ONLY)

- › GM Vortec 8100 V8 (8.1L) Gas Engine with Allison® 2000 Series 6-Speed Automatic Transmission with 5th and 6th Gear Overdrives
- › Engine Displacement: 496"/8.1L
- › Power: 340 HP
- › Torque: 455 lbs./ft.
- › 100 Gallon Fuel Tank
- › Upgrade 18" Leather Wrap Steering Wheel
- › 145 Amp Alternator
- › Radial Tires: 255/80R/22.5
- › Polished Aluminum Wheels
- › Front Suspension: Monoleaf Springs, Sway-Bar and Bilstein® Shocks
- › Rear Suspension: Coil Springs and Bilstein® Shocks Plus Torque Box
- › 55 Degree Wheel Cut
- › Quadrauc Braking System with Four Wheel Disc Brakes, Four Wheel Anti-Lock Function
- › Adjustable Brake Pedal
- › Prewire for Supplemental Braking System
- › Fully Automatic Hydraulic Leveling System
- › 5,000 Lb. Hitch Receiver with Dual Connector 4-Pin or 7-Pin

## COCKPIT

- › Fiberglass Automotive Dash with Silver Graphite Instrumentation Panel
- › CD Player/Radio with Sirius-Ready Compatibility, Weather Band and Six Speakers
- › Power Sunvisors
- › Rear Vision System with Audio and Adjustable Camera
- › 6-Quart Tank for Windshield Fluid
- › Tilt/Telescopic Steering Wheel (N/A: 38PLT)
- › Tilt Steering Wheel (38PLT Only)
- › Molded Pilot Side Console with Two-Tier Cup Holder and Control Pad for Transmission Shifter
- › Molded Co-Pilot Side Console with Two-Tier Cup Holder
- › Leatherette Pilot and Co-Pilot Cockpit Recliner Seats
- › Six-Way Power Pilot Seat
- › Carpeted Driver and Passenger Floor Mats
- › Wood Framed Front and Side Wing Cockpit Overhead Cabinets

## OPTIONS

- › Six-Way Power Co-Pilot Seat
- › Sirius Radio Satellite System (Requires Subscription)
- › GPS Navigation System
- › 3-Camera Rear Vision System with Audio and Adjustable Center Camera
- › Interior Solar Privacy Sunscreens (Manual)

## APPLIANCES AND ACCESSORIES

- › Large Double-Door Refrigerator with Ice Maker 8 Cu. Ft.
- › High-Output 3-Burner Cooktop with Removable Solid Surface Range Covers
- › Spacesaver Convection Microwave
- › Washer/Dryer Prep (N/A: 34PDD, 36SBD, 36WBD)
- › 26" LCD Stereo Color TV with Remote Control in Cockpit Overhead
- › 20" Color TV with Remote Control in Bedroom (N/A: 36SBD)
- › 20" LCD TV with Remote in Bedroom (36SBD)
- › Curbside: Exterior Hook-Ups for DSS Dish, Cable, 110V Outlet with Hatch Door to Exterior
- › Digital Satellite System Prep (Front Cockpit Overhead and Bedroom TV Location)

## OPTIONS

- › Large Double-Door Refrigerator with Ice Maker 10 Cu. Ft.
- › Large Four-Door Refrigerator with Ice Maker (N/A with Pantry)
- › High-Output 3-Burner Range with Oven
- › Combination Washer/Dryer (N/A: 34PDD, 36SBD, 36WBD)
- › Central Vacuum System
- › Home Theater Surround Sound System with Sub-Woofers
- › Bedroom DVD Player

## INTERIOR

- › New Profile Raised Panel Cabinet Door, Upper Cabinet Doors and Wardrobe Doors with Top Arch
- › Lower Cabinet Doors Squared Flat Panel
- › Hardwood Cabinet End Panels in Living Area
- › Black ABS Refrigerator Insert
- › Heavy-Duty Ball Bearing Drawer Guides
- › Wood Cabinet Drawer Boxes
- › Solid Surface Radius Profile Kitchen Countertop with Under-Mounted Stainless Steel Sink with Two Sink Covers
- › Kitchen Countertop Extension with Two Drawers Below; 110V Outlet under Extension
- › Two Deep Drawers Located below Countertop Extension
- › Kitchen Countertop End Splash
- › Bath Lavatory Countertop, Laminated with Solid Surface Edge Treatment and Solid Surface Backsplash
- › Dinette Countertops, Laminated with Solid Surface Countertop Edge Treatment
- › All Other Countertops Laminated with Solid Surface Countertop Edge Treatment
- › Kitchen Pantry next to Refrigerator with Full-Height Roll-Out Storage Cabinet (N/A with Four-Door Refrigerator Option)
- › Kitchen: Smoked Mirrors behind Stove Area
- › Linoleum Flooring: Kitchen, Bath, Entry with Linoleum Runner from Entryway to Kitchen
- › Carpeting with Pad in Living Area and Bedroom
- › Soft Touch Padded Vinyl Ceiling
- › Wood Slide-Out Fascia with Fluted Wood Inserts in Fascia Legs
- › Living Area: Mirror, Wainscoting and Chair Rail Accent under Mirror (N/A: 36SBD, 38PLT)
- › French Style Door into Bedroom (38PLT Only)
- › Satin Nickel Cabinetry Hardware and Bath Accessories
- › Hardwood Framed Pocket Doors with Flat Panel Insert
- › Blackout Day/Night Pleated Shades in Living Area and Bedroom

### OPTIONS

- › New Decors: Autumn Trail, Rembrandt and Urban Loft
- › Wood Choice: Newport Cherry, Champagne Select

## FURNITURE

- › Party Table behind Co-Pilot Seat (34PDD Only)
- › Arched Back Wood Booth Dinette with Side-Sliding Dinette Tabletop
- › Roadside: Fabric Easy Bed Sofa
- › Curbside: Fabric Easy Bed Sofa (N/A: 34PDD)
- › New Style Leatherette Swivel Rocker Barrel Chair (34PDD Only)
- › Bedroom: Two Fabric Barrel Chairs with Center Table (38PLT)

### OPTIONS

- › Roadside: Fabric Hide-A-Bed Sofa with Air Mattress
- › Roadside: Leatherette Hide-A-Bed Sofa with Air Mattress
- › Leatherette Euro-Recliner Chair with Ottoman (34PDD Only)
- › Roadside: Leatherette Ensemble Booth Dinette Includes Leatherette Hide-A-Bed Sofa Selection with Air Mattress (No Seatbelts in Booth)
- › Curbside: Leatherette Easy Bed Sofa IPO Fabric Sofa (N/A: 34PDD)
- › Curbside: One Leatherette Euro-Recliner Chair with Ottoman and Wall-Mounted Table (N/A: 34PDD) (IPO Sofa)
- › Freestanding Dinette with Two Freestanding Chairs and Two Folding Chairs

## ELECTRICAL SYSTEMS AND LIGHTS

- › 50 Amp 120V Distribution Panel and Cord
- › 55 Amp Electronic 12V Power Converter
- › Onan® 6.0 kW Diesel Generator (N/A: 38PLT)
- › Onan® 5.5 kW Gas Generator (38PLT Only)
- › Two 6V House Batteries
- › Two 12V Heavy-Duty Chassis Batteries
- › Battery Disconnect Switch at Front Door
- › Exterior Power Entry Step with Light
- › Interior Stepwell Entry Step Lights
- › Water Pump Switch in Service Bay Area and Convenience Center
- › Lights in Outside Storage Compartments
- › Underhood Utility Light
- › Two Recessed Ceiling Map Lights above Cockpit Seats, One Pilot Side and One Co-Pilot Side
- › Hallway Convenience Center
- › Fluorescent Ceiling Lights Living Area and Bath
- › Satin Nickel Decorative Lighting Living Room Wall Light at Sofa Location, Dinette Ceiling Light and Bath Vanity Light
- › Three Recessed Ceiling Lights above Countertop Work Area Kitchen

### OPTIONS

- › 600 Watt Inverter



## PLUMBING AND LP SYSTEMS

- › Kitchen Stainless Steel Under-Mounted Sink with Single Lever Satin Nickel Faucet with Pullout Sprayer
- › Central Water Filtration System
- › New Bath Lavatory Faucet Satin Nickel Finish
- › Demand Water System and Water Pump
- › 10-Gallon LP Gas/Electric Water Heater with Electronic Ignition
- › Winterization Valving System
- › Water Heater Bypass Valve
- › China Toilet with Sprayer
- › No-Fuss Flush Holding Tank Rinsing System
- › Insulated Systems Compartment with Easy Access to Hook-Up
- › Shower inside Wet Bay with Hot/Cold Water, Shower Head with Shut-Off
- › Soap Dispenser inside Utility Bay
- › Pressurized Water Fill
- › Contained Storage Area for Sewer Hose
- › One-Piece Fiberglass Shower
- › Satin Nickel Shower Door Frame with Obscure Glass (34SBD, 34PDD)
- › Rounded Satin Nickel Shower Door Frame with Decorative Glass (36SBD, 36WBD and 38PLT)

## OPTIONS

- › Bathtub Option IPO Shower, Rounded Shower Stalls Will Be Neo-Angled with Tub Option

## HEATING, VENTS AND AIR CONDITIONING

- › Dual 13.5M BTU Air Conditioners with Ducted Air and Wall Digital Thermostat
- › Electronic Ignition Furnace (35M BTU on 34SBD, 34PDD, 36SBD, 36WBD) (40M BTU on 38PLT)
- › Kitchen Powered Attic Fan with Wall Control of Automatic Dome and Fan Power
- › Bath Powered Attic Fan with Wall Control of Automatic Dome and Fan Power

## OPTIONS

- › Dual 13.5M BTU Air Conditioners with Heat Pumps
- › 12V Heater in Wet Bay

## WINDOWS, DOORS AND AWNINGS

- › Radius Flush-Mounted Dual Pane Safety Glass Dark Tinted Slider Windows
- › Patio Awning with Metal Cover
- › Topper Slide-Out Awnings Living Area and Bedroom
- › Tinted Skylight in Bathroom with Protecta Glaze

## OPTIONS

- › Eclipse Automatic Patio Awning
- › Front Door Awning
- › Bedroom Skylight with Decorative Wood Framed with Shade (38PLT Only)
- › Window Awnings Living Area Slide-Out House Windows (Except Kitchen Windows)

## SAFETY

- › Fire Extinguisher
- › Deadbolt Lock on Entrance Door
- › 120V GFI Protected Circuit, Kitchen, Bath and Exterior
- › LP Gas Detector
- › Smoke Detector
- › Carbon Monoxide Detector
- › Pilot and Co-Pilot Three-Point Seatbelts
- › Third Brake Safety Light
- › Egress Windows



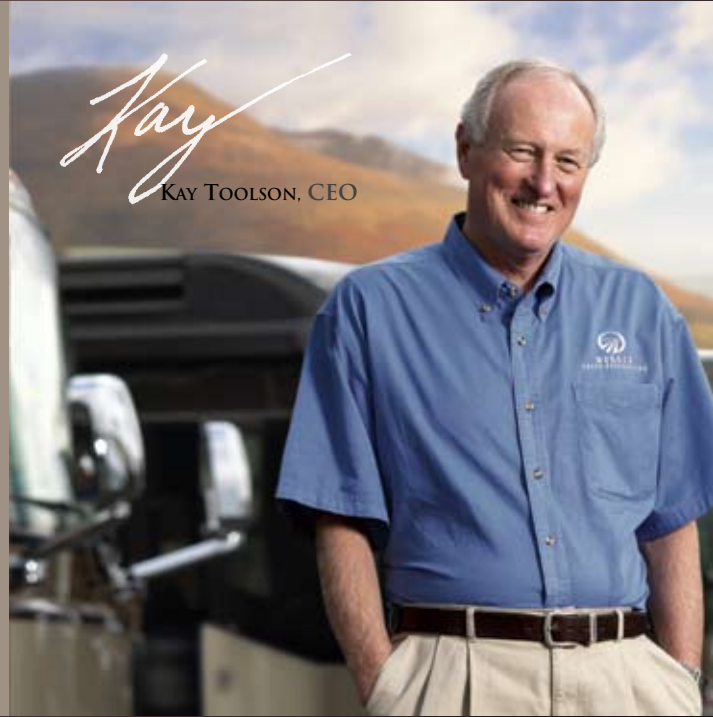
08

LAPALMA® XL

## BEING DIFFERENT MAKES ALL THE DIFFERENCE.

At Monaco, we always strive to be the best. And that means thinking outside the box. Giving you more of what you want in an RV. Like our exclusive Roadmaster chassis. Three factory-owned service centers. And programs like Monaco Financial Services and 24/7 roadside assistance. No other manufacturer can match Monaco's offerings. No one even comes close. Why not discover the difference for yourself? Go Monaco.

**“No other manufacturer can match Monaco's offerings. No one even comes close.”**



KAY TOOLSON, CEO

[www.monacodifferent.com](http://www.monacodifferent.com) | 877-252-4666

DEALER:



MONACO®

DRIVING YOUR DREAM.

91320 Coburg Industrial Way, Coburg, OR 97408 | 800 634-0855

[www.monacocoach.com](http://www.monacocoach.com)

Monaco Coach Corporation is traded on the NYSE under the listing MNC. | 1007 NPN: BROMLPD