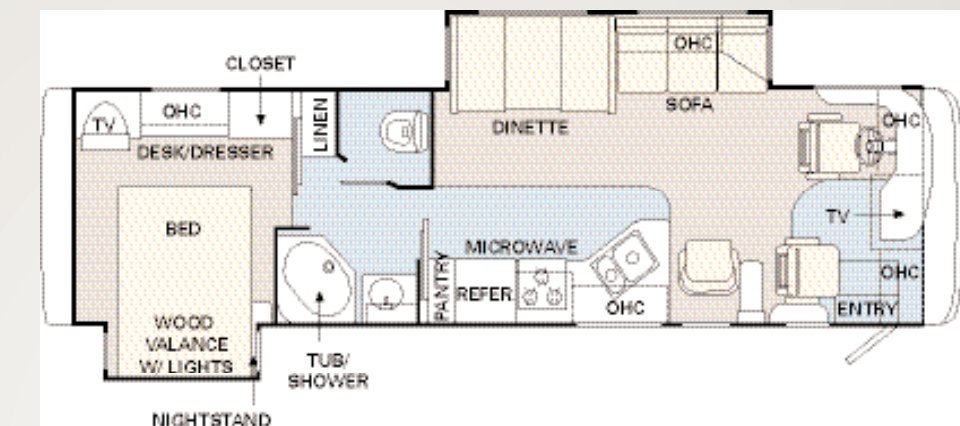


34PBD

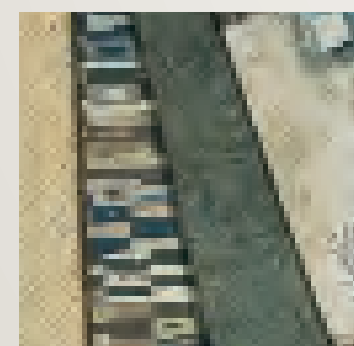


34PDD

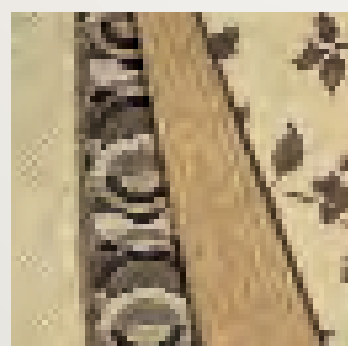
Exterior, Fabrics and Woods



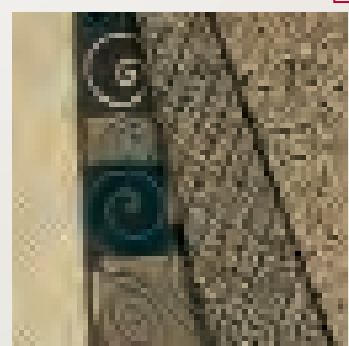
- A Carpet
- B Dinette
- C Sofa
- D Bedspread



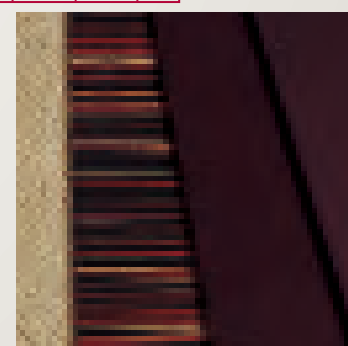
BASIL LEAF



ESPRESSO II



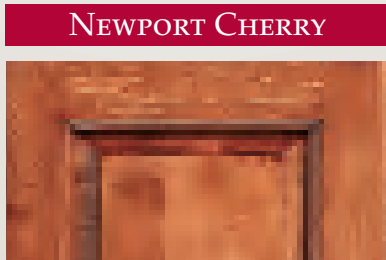
ONYX II



RL HAMPSTEAD LANE



NEW VINTAGE OAK



NEWPORT CHERRY



CHAMPAGNE MAPLE

BODY CONSTRUCTION

Standard Features

- Alumaframe Superstructure
- Steel Cage Cockpit Construction
- Peaked One Piece Fiberglass Roof with Fiberglass Insulation
- Smooth Gel Coat Fiberglass Exterior Walls
- New Front and Rear Molded Fiberglass Caps
- Rear Cap with Integrated Camera
- One-Piece Generator Access Door
- Rear Engine Doors
- Fiberglass Engine Cover
- One Piece Front Windshield
- 84" Interior Height
- Aluminum Framed Floor on Steel Trusses
- Laminated Structurwood Flooring
- Electric Flush Floor Step Well Cover
- Interior Paneling with 3/4" Insulation
- Foam Insulated Floor Framing with Underbelly
- Power Heated Remote Exterior Front Mounted Mirrors
- Driving Lights
- Low profile sealed LED marker lights
- Pass-through Storage Bays Under Slide-outs
- One-Piece Polyethylene Storage Compartment
- Deluxe Full Body Paint with Vinyl Graphics
- Rear Ladder
- Interior Rubber Entry Step
- Exterior Double Entry Steps
- Undercoating

COCKPIT

Standard Features

- Fiberglass Automotive Dash with Silver Graphite Instrumentation Panel
- CD Player/Radio with DVD Player, Sirius Ready Compatibility, Weather Band, Remote, and Six Speakers
- Power Sunvisors
- Pilot and Co-pilot front overhead with raised panel cabinet doors
- Front cab over TV's secured with steel framing
- Rear Vision System with Audio and Adjustable Camera
- Intermittent Windshield Wipers
- 6-Quart Tank for Windshield Fluid
- Tilt/Telescopic Steering Wheel
- Cruise Control
- Power Steering
- Electric Automotive Horn
- Molded pilot side console, with Two Tier Cup Holder and Control Pad for Transmission Shifter
- Molded co-pilot side console, with Two Tier Cup Holder and Map pocket
- Vinyl Covered Molded Center Console with Drawer and Tip-tray Storage
- New Style Soft Touch Vinyl Pilot & Co-Pilot Recliner Seats (N/A with Hampstead Lane-RL Sport Décor)
- New Style Distressed Optima Leather Pilot & Co-Pilot Seats (Hampstead Lane-RL Sport Décor)
- Six-Way Power Pilot Seat
- Seat belt Warning Light on Dash
- Carpeted Driver and Passenger Floor Mats

Options

- Front Cap Protective Mask
- Exterior Chrome Front Mount Mirrors with Heat and Remote
- Standard Run Savings Package; Front Cap Protective Mask, 3-Camera Rear Vision System with Audio and Adjustable Center Camera, Home Theater Surround Sound System added to In-dash Stereo with DVD Player, Eclipse Automatic Polyweave Patio Awning

CHASSIS/ENGINE/SUSPENSION

Standard Features

- Roadmaster RSR Rails Chassis
- Cummins ISB-AD 300 HP Low Torque Engine with Allison 1000 MH 5 speed World Transmission
- Push button Shift Pad on 1000MH Transmission
- Engine Displacement: 5.9L/359 Cu. In.
- Torque: 600 lbs/ft. Max. Net at 1,600 RPM

- 75 Gallon Fuel Tank
- 156 Amp Alternator
- Rear Axle Ratio: 4.78:1
- Radial Tires: 255/70R/22.5
- Stainless Steel Wheel Simulators
- Leaf Spring Suspension
- Four Gas Shock Absorbers
- Hydraulic Anti-Lock Braking System
- Pre-wire for Supplemental Braking System
- Air Cleaner Restriction Indicator
- Fuel/Water Separator
- Remote Transmission Fill
- Fully Automatic Hydraulic Leveling System
- 4,000Lb. Hitch Receiver with Dual Connector 4-Pin or 7-Pin

APPLIANCES AND ACCESSORIES

Standard Features

- Large Double-Door Refrigerator with Icemaker 8 Cu. Ft.
- High-Output 3-Burner Cook top
- Removable Solid Surface Range Covers
- Convection Microwave with Touch Control and Under mounted Range Hood
- 24" Flat Screen Stereo Color TV with Remote Control in Living Area
- 20" Flat Screen Color TV with Remote Control in Bedroom
- TV Antenna
- DVD and Video Control Box with Booster and RF Modulator
- Exterior Hook-ups for DSS Dish and Cable
- Interior Cable TV Hook-Up and Telephone Jacks
- Digital Satellite System Prep
- Wiring for DVD Player Hook-up to both TV locations
- Exterior Gas Line Hook-up Prep for LP Accessories

- 3-Camera Rear Vision System with Audio and Adjustable Center Camera
- CB Radio Prep

Options

- Large Double-Door Refrigerator with Icemaker 10 Cu. Ft.
- Large Four-Door Refrigerator with Icemaker, N/A with Pantry
- High Output Three-Burner Range with Oven
- Home Theater Surround Sound System added to In-dash Stereo with DVD Player

INTERIOR

Standard Features

- New Vintage Oak Cabinetry
- Upper Raised Panel Hardwood Cabinet Doors with Flat Panel door on all lower cabinet and Bedroom Wardrobe Doors
- Hardwood Cabinet End Panels in Living Area
- Black ABS Refrigerator Insert
- Wallpaper Border inside Private Bath
- Mini-Struts on Top Hinged Overhead Storage Doors and Positive Catches on all Other Doors
- Heavy Duty Ball Bearing Drawer Guides
- Wood Cabinet Drawer Boxes
- Satin Nickel Cabinetry Hardware and Bath Accessories

Options

- Six-Way Power Co-Pilot Seat
- Optima Leather Pilot and Co-Pilot Seats (N/A with Hampstead Lane-RL Sport Décor)

- Solid Surface Radius Profile Kitchen Countertop with Under Mounted Plexus-stone Sink with Two Sink Covers
- Toe Kicks on Kitchen and Bath Base Cabinets
- Kitchen Countertop End Splash (34PBD)
- Bath Lav Countertop. Laminate Bathroom Countertop with ABS Decorative Backsplash, and Laminate Perm-Edge
- All Others Countertops Laminated with Prem-edge, Except Kitchen
- Kitchen Overhead Cabinets with Adjustable Shelf (34PDD)
- Kitchen Pantry next to Refrigerator with Roll-out Storage in Upper Cabinet and Three Drawers below (N/A with Four Door Refrigerator Option)
- Kitchen; Smoked Mirrors behind Stove Area
- Kitchen Countertop Extension (34PBD)
- Linoleum Flooring Kitchen, Bath, and Entry Way
- Textured Style Nylon Carpeting with Pad in Living Area and Bedroom
- Soft Touch Padded Vinyl Ceiling
- Wood Slide-out Fascia with Fabric Inserts
- Living Area; Elongated Beveled Octagon Mirror, Wainscoting Accent under Mirror (34PDD)
- Wainscoting and Chair Rail Accent on Kitchen Bath Wall, Kitchen side (34PBD)
- Bath Door with Accent Trim on Hallway Side
- Wood Trim on Bath Door, Door Jam Opening Hallway Side
- Accent Mirror on Rear Bedroom Wall with Wainscoting and Chair rail Accent Under Mirror (34PDD)
- Bedspread with Two Decorative Pillows
- Decorative Fabric Headboard
- Blackout Day/Night Pleated Shades in Living Area and in Bedroom
- Mini Blinds in Kitchen (34PDD)
- Soil Repellant on Fabric, Teflon Fabric Protection

Options

- Décors; Espresso II, Basil Leaf, Onyx II, Hampstead Lane-RL Sport
- Wood Choice: Newport Cherry, Champagne Select

FURNITURE

Standard Features

- Queen Bed with Nightstand(s)
- Party Table behind Co-Pilot Seat (34PDD)
- Arched Back Wood Booth Dinette, with Side Sliding Table Top
- Fabric Jackknife Sofa with Two pillows
- Fabric Swivel Glider Barrel Chair (34PDD)

ELECTRICAL SYSTEMS AND LIGHTS

Standard Features

- 30 Amp 120V Distribution Panel and Power Cord
- 55 Amp Electronic 12V Power Converter
- Onan 5.5 kW Diesel Generator
- Two 6V House Batteries
- Two 12V Heavy Duty Chassis Batteries
- Battery Disconnect Switch at Front Door
- 12V & 110V Outlet in Cockpit Area
- Porch Light and Exterior Step Light on same Switch
- Exterior Power Entry Step, with Light
- Interior Step Well Entry Step Lights
- Water Pump Switch in Service Bay Area and Convenience Center
- Lights in Outside Storage Compartments
- 110V Receptacles In Outside Storage Compartment
- Under hood Utility Light
- Receptacle and Phone Jack in Dinette Area
- Directional Map Lights Pilot and Co-Pilot Seats
- Redesigned Convenience Center in Hallway
- Fluorescent Ceiling Lights Living Area and Bath

- Satin Nickel Decorative Lighting Living room Wall Light at Sofa Location, Dinette Ceiling Light, Bedroom Cosmetic (34PDD) and Bath Vanity Light
- Satin Nickel Wall Light at Dinette Location (34PBD)
- Satin Nickel Swing Arm Light at Barrel Chair Location (34PDD)
- 12V Incandescent Clear Lens Single Pancake Lights with His and Hers switches above Bed
- Wardrobe Closet Lights

Options

- Energy Management System with 50 AMP Service
- 50 Amp 120V Distribution Panel and Cord
- 140 Watt Inverter

PLUMBING AND LP SYSTEMS

Standard Features

- Kitchen Composite Under Mounted Sink with Single Lever Satin Nickel Faucet with Pull-Out Sprayer
- Separate Satin Nickel finish Faucet for Filtered Water
- Bath Lav Faucet Single Handle Satin Finish
- Demand Water System and Water Pump
- 10 Gallon LP Gas/Electric Water Heater with Electronic Ignition, DSI
- Winterization Valving System
- Water Heater By-Pass Valve
- Toilet with Sprayer
- No-Fuss Flush Holding Tank Rinsing System
- Insulated Systems Compartment with Easy Access to Hook-Up
- Shower inside Wet Bay with Hot/Cold Water
- Soap Dispenser inside Utility Bay
- Pressurized Water Fill
- Contained storage area for sewer hose
- One-Piece Fiberglass Shower
- Shower Diverter, Hose and Head, Satin Finish with Satin Slide Bar for Shower Head with Soap Dish
- Satin Nickel Shower Door Frame with Clear Glass

Options

- Bath Tub IPO Shower

	34PBD	34PDD
WEIGHTS		
Gross Vehicle Weight	22,000 lbs.	22,000 lbs.
Gross Combined Weight	26,000 lbs.	26,000 lbs.
Front Gross Axle Weight	8,000 lbs.	8,000 lbs.
Rear Gross Axle Weight	14,500 lbs.	14,500 lbs.
MEASUREMENTS		
Wheelbase	192"	192"
Overall Length	34' 10"	34' 10"
Overall Height	152"	152"
Interior Height	84"	84"
Interior Width	94.5"	94.5"
Exterior Width	100.5"	100.5"
TANK CAPACITIES		
Water Heater	10 gal.	10 gal.
Grey Tank	60 gal.	60 gal.
Black Tank	39 gal.	39 gal.
Fresh Tank	75 gal.	75 gal.
LP Tank	16 gal.	16 gal.

WARRANTIES

12 month/24,000 mile
basic limited warranty

5 year/50,000 mile
limited warranty on aluminum or steel frame
structure of sidewall, roof, front and rear cap

3 year/36,000 mile
limited warranty on Roadmaster chassis

Applies to certain models. See owner's manual for complete details.

Standards & Specifications

HEATING, VENTS AND AIR CONDITIONING

Standard Features

- One 13.5M BTU and One 11.0M BTU Air Conditioner with Ducted Air and Wall Digital Thermostat
- 35M BTU Electronic Ignition Furnace
- Electronic Dash AC/Heat Climate Control System
- Above Floor Ducted Heating System
- Kitchen Powered Attic Fan with Wall Control of Automatic Dome and Fan Power
- Bath Powered Attic Fan with Wall Control of Automatic Dome and Fan Power
- Satin Nickel Finish Metal Air Return Grill for Furnace

Options

- Dual 13.5M BTU Air Conditioner (Requires 50 Amp Service)

- Dual 13.5M BTU Air Conditioner with Heat Pumps (Requires 50 Amp Service)
- 12V Heater in Wet Bay

WINDOWS, DOORS AND AWNINGS

Standard Features

- Radius Flush Mount Dual Pane Safety Glass Dark Tinted Slider Windows
- Front Entry Door with Clear Glass, Removable Screen, and Anti-Skid Steps
- Exterior Entry Door Grab Handle
- Two Interior Grab Handles, One Floor to Dash and One on Door Jam
- Polyweave Vinyl Patio Awning
- Topper Slide-Out Awnings Living Area and Bedroom
- Tinted Skylight in Bathroom with Protecta Glaze

Options

- Eclipse Automatic Polyweave Patio Awning

- Polyweave Vinyl Front Door Awning
- Window awnings Living Area slide-out house windows (34PDD)

SAFETY FEATURES

Standard Features

- Fire Extinguisher
- Deadbolt Lock on Entrance Door
- 120V GFI Protected Circuit, Kitchen, Bath and Exterior
- LP Gas Detector
- Smoke Detector
- Carbon Monoxide Detector
- Pilot and Co-Pilot Three-Point Seat Belts
- Third Brake Safety Light
- Egress Windows



MONACO
DRIVING YOUR DREAM.

SIGNATURE SERIES

THE EXECUTIVE®

DYNASTY®

WINDSOR®

CAMELOT™

DIPLOMAT®

KNIGHT®

CAYMAN®

LAPALMA®

MONARCH SE®

ESQUIRE™

Welcome to the first step toward living your dream. You'll discover that it's not so far from here to there. Because Monaco has a coach that's right for every dreamer. Look closely, and you'll find the high-tech, high style luxury you've dreamed about is also the very best deal under the sun. Point by point, in every price range, Monaco leads the way in performance, comfort and safety. Yes, you're headed for a dream come true. Just take your first step, and climb aboard.



91320 Coburg Industrial Way, Coburg, OR 97408
800 634-0855

606 Nelson's Pkwy., Wakarusa, IN 46573
800 650-7337

www.monacocoach.com

Monaco Coach Corporation is traded on the NYSE under the listing MNC.
1105



2006 LAPALMA DIESEL

INTRODUCING OUR MOST
AFFORDABLE DIESEL
PUSHER EVER — THE LAPALMA DIESEL.

